



**ELECTRONIC COPY**

LG805677419  
Report verification at igi.org



May 29, 2026

IGI Report Number **LG805677419**

Description **LABORATORY GROWN DIAMOND**

Shape and Cutting Style **KITE STEP CUT**

Measurements **10.82 X 7.10 X 4.01 MM**

**GRADING RESULTS**

Carat Weight **1.50 CARAT**

Color Grade **E**

Clarity Grade **VS 1**

May 29, 2026  
IGI Report Number **LG805677419**  
Description **LABORATORY GROWN DIAMOND**  
Shape and Cutting Style **KITE STEP CUT**  
Measurements **10.82 X 7.10 X 4.01 MM**

**GRADING RESULTS**

Carat Weight **1.50 CARAT**

Color Grade **E**

Clarity Grade **VS 1**

**ADDITIONAL GRADING INFORMATION**

Polish **EXCELLENT**

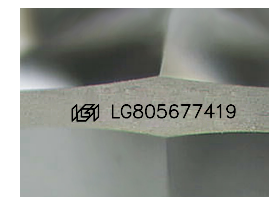
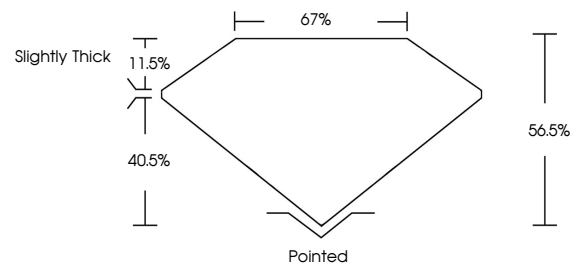
Symmetry **EXCELLENT**

Fluorescence **NONE**

Inscription(s) **IGI LG805677419**

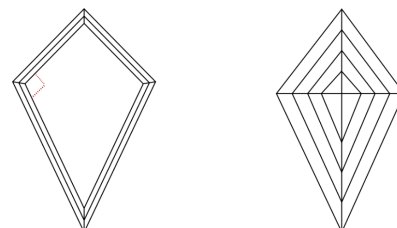
Comments: This Laboratory Grown Diamond was created by Chemical Vapor Deposition (CVD) growth process.  
Type IIa

**PROPORTIONS**



Sample Image Used

**CLARITY CHARACTERISTICS**



**KEY TO SYMBOLS**

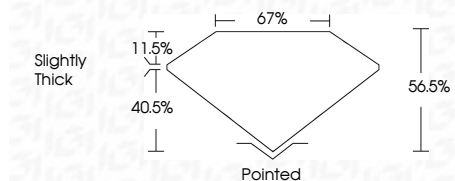
Red symbols indicate internal characteristics.  
Green symbols indicate external characteristics.

**COLOR**

D E F G H I J Faint Very Light Light

**CLARITY**

FL	IF	VS <sup>1-2</sup>	VS <sup>1-2</sup>	SI <sup>1-2</sup>	I <sup>1-3</sup>
Flawless	Internally Flawless	Very Very Slightly Included	Very Slightly Included	Slightly Included	Included



**ADDITIONAL GRADING INFORMATION**

Polish **EXCELLENT**

Symmetry **EXCELLENT**

Fluorescence **NONE**

Inscription(s) **IGI LG805677419**

Comments: This Laboratory Grown Diamond was created by Chemical Vapor Deposition (CVD) growth process.  
Type IIa



May 29, 2026  
IGI Report No. **LG805677419**  
**KITE STEP CUT**

**1.50 CARAT**  
E

**10.82 X 7.10 X 4.01 MM**

Carat Weight  
Color Grade  
Clarity Grade  
Depth  
Table  
Girdle  
Culet  
Polish  
Symmetry  
Fluorescence  
Inscription(s)

**1.50 CARAT**  
**VS 1**  
**66.6%**  
**67%**  
**Slightly Thick**  
**Pointed**  
**EXCELLENT**  
**EXCELLENT**  
**NONE**  
**IGI LG805677419**

Comments: This Laboratory Grown Diamond was created by Chemical Vapor Deposition (CVD) growth process.  
Type IIa