



ELECTRONIC COPY

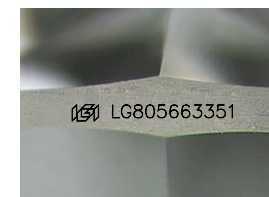
LG805663351
Report verification at igi.org



May 29, 2026
IGI Report Number **LG805663351**
Description **LABORATORY GROWN DIAMOND**
Shape and Cutting Style **KITE STEP CUT**
Measurements **9.39 X 6.52 X 3.83 MM**

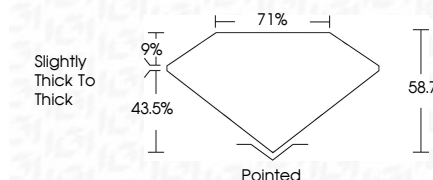
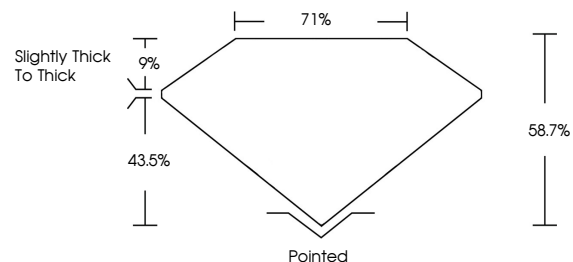
GRADING RESULTS

Carat Weight **1.15 CARAT**
Color Grade **E**
Clarity Grade **VS 1**

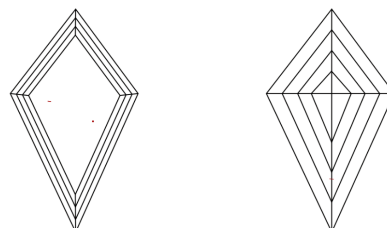


Sample Image Used

PROPORTIONS



CLARITY CHARACTERISTICS



KEY TO SYMBOLS

Red symbols indicate internal characteristics.
Green symbols indicate external characteristics.

COLOR

D E F G H I J Faint Very Light Light

CLARITY

FL	IF	VS ¹⁻²	VS ¹⁻²	SI ¹⁻²	I ¹⁻³
Flawless	Internally Flawless	Very Very Slightly Included	Very Slightly Included	Slightly Included	Included

ADDITIONAL GRADING INFORMATION

Polish **EXCELLENT**
Symmetry **EXCELLENT**
Fluorescence **NONE**
Inscription(s) **IGI LG805663351**
Comments: This Laboratory Grown Diamond was created by Chemical Vapor Deposition (CVD) growth process. Type IIa



May 29, 2026
IGI Report No. **LG805663351**
KITE STEP CUT
9.39 X 6.52 X 3.83 MM
Carat Weight **1.15 CARAT**
Color Grade **E**
Clarity Grade **VS 1**
Depth **58.7%**
Table **71%**
Girdle **Slightly Thick To Thick**
Culet **Pointed**
Polish **EXCELLENT**
Symmetry **EXCELLENT**
Fluorescence **NONE**
Inscription(s) **IGI LG805663351**
Comments: This Laboratory Grown Diamond was created by Chemical Vapor Deposition (CVD) growth process. Type IIa