



ELECTRONIC COPY

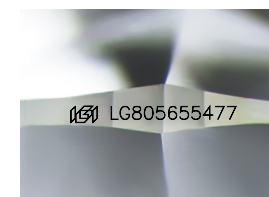
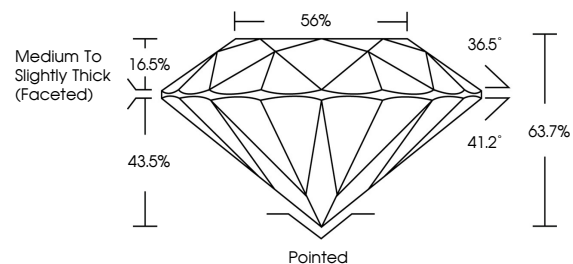
LG805655477
Report verification at igi.org



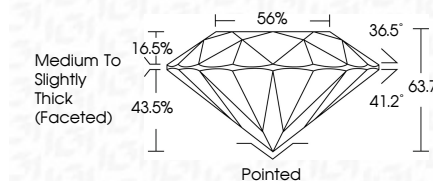
May 29, 2026
IGI Report Number LG805655477
Description LABORATORY GROWN DIAMOND
Shape and Cutting Style ROUND BRILLIANT
Measurements 7.16 - 7.23 X 4.59 MM
GRADING RESULTS
Carat Weight 1.46 CARAT
Color Grade D
Clarity Grade VS 1
Cut Grade EXCELLENT

May 29, 2026
IGI Report Number LG805655477
Description LABORATORY GROWN DIAMOND
Shape and Cutting Style ROUND BRILLIANT
Measurements 7.16 - 7.23 X 4.59 MM
GRADING RESULTS
Carat Weight 1.46 CARAT
Color Grade D
Clarity Grade VS 1
Cut Grade EXCELLENT

PROPORTIONS



Sample Image Used



ADDITIONAL GRADING INFORMATION

Polish EXCELLENT
Symmetry EXCELLENT
Fluorescence NONE
Inscription(s) IGI LG805655477

Comments: This Laboratory Grown Diamond was created by Chemical Vapor Deposition (CVD) growth process. Type IIa

COLOR

D E F G H I J Faint Very Light Light

CLARITY

FL IF VS 1-2 VS 1-2 SI 1-2 I 1-3
Flawless Internally Flawless Very Very Slightly Included Very Slightly Included Slightly Included Included

ADDITIONAL GRADING INFORMATION

Polish EXCELLENT
Symmetry EXCELLENT
Fluorescence NONE
Inscription(s) IGI LG805655477
Comments: This Laboratory Grown Diamond was created by Chemical Vapor Deposition (CVD) growth process. Type IIa



IGI

May 29, 2026
IGI Report No. LG805655477
ROUND BRILLIANT
7.16 - 7.23 X 4.59 MM
1.46 CARAT
Color Grade D
Clarity Grade VS 1
Depth 63.7%
Table 56%
Medium To Slightly Thick (Faceted)
Cut Grade EXCELLENT
Polish EXCELLENT
Symmetry EXCELLENT
Fluorescence NONE
Inscriptions(s) IGI LG805655477
Comments: This Laboratory Grown Diamond was created by Chemical Vapor Deposition (CVD) growth process. Type IIa