



ELECTRONIC COPY

LG805647615
Report verification at igi.org



June 4, 2026
IGI Report Number LG805647615
Description LABORATORY GROWN DIAMOND
Shape and Cutting Style CUT CORNERED RECTANGULAR MODIFIED BRILLIANT
Measurements 14.39 X 8.97 X 5.92 MM
GRADING RESULTS
Carat Weight 7.01 CARATS
Color Grade FANCY VIVID GREEN
Clarity Grade SI 1

LABORATORY GROWN DIAMOND REPORT

June 4, 2026
IGI Report Number LG805647615
Description LABORATORY GROWN DIAMOND
Shape and Cutting Style CUT CORNERED RECTANGULAR MODIFIED BRILLIANT
Measurements 14.39 X 8.97 X 5.92 MM

GRADING RESULTS

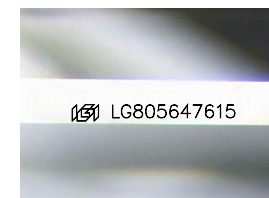
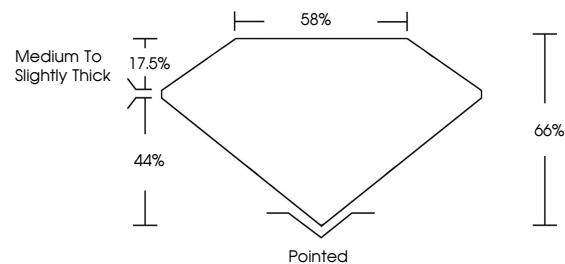
Carat Weight 7.01 CARATS
Color Grade FANCY VIVID GREEN
Clarity Grade SI 1

ADDITIONAL GRADING INFORMATION

Polish EXCELLENT
Symmetry EXCELLENT
Fluorescence NONE
Inscription(s) IGI LG805647615

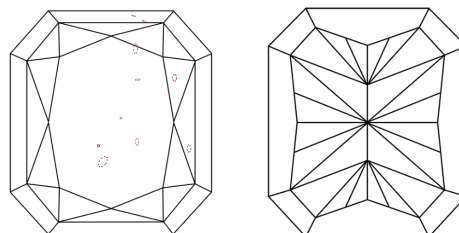
Comments: This Laboratory Grown Diamond was created by Chemical Vapor Deposition (CVD) growth process.
Indications of post-growth treatment.

PROPORTIONS



Sample Image Used

CLARITY CHARACTERISTICS



KEY TO SYMBOLS

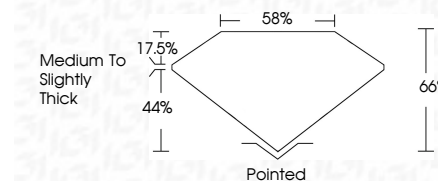
Red symbols indicate internal characteristics.
Green symbols indicate external characteristics.

COLOR

D E F G H I J Faint Very Light Light

CLARITY

FL IF VS 1-2 VS 1-2 SI 1-2 I 1-3
Flawless Internally Flawless Very Very Slightly Included Very Slightly Included Slightly Included Included



ADDITIONAL GRADING INFORMATION

Polish EXCELLENT
Symmetry EXCELLENT
Fluorescence NONE
Inscription(s) IGI LG805647615
Comments: This Laboratory Grown Diamond was created by Chemical Vapor Deposition (CVD) growth process.
Indications of post-growth treatment.



June 4, 2026
IGI Report No. LG805647615
CUT CORNERED RECT. MODIFIED BRILLIANT
14.39 X 8.97 X 5.92 MM
7.01 CARATS
FANCY VIVID GREEN
SI 1
66%
85%
Medium to Slightly Thick
Pointed
EXCELLENT
EXCELLENT
NONE
IGI LG805647615
Comments: This Laboratory Grown Diamond was created by Chemical Vapor Deposition (CVD) growth process.
Indications of post-growth treatment.