



**ELECTRONIC COPY**

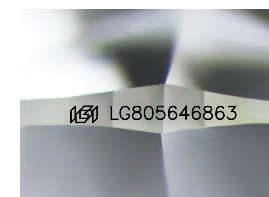
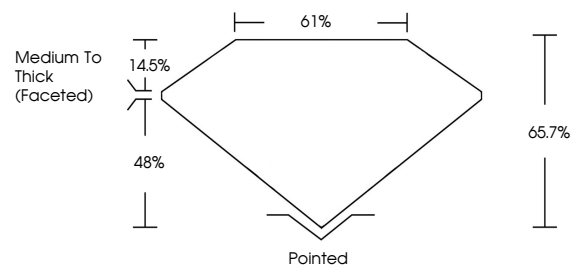
LG805646863  
Report verification at igi.org



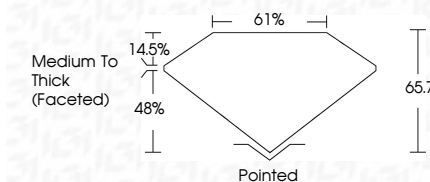
May 28, 2026  
IGI Report Number **LG805646863**  
Description **LABORATORY GROWN DIAMOND**  
Shape and Cutting Style **SQUARE CUSHION MODIFIED BRILLIANT**  
Measurements **7.33 X 7.18 X 4.72 MM**  
**GRADING RESULTS**  
Carat Weight **2.02 CARATS**  
Color Grade **F**  
Clarity Grade **VS 1**  
Cut Grade **VERY GOOD**

May 28, 2026  
IGI Report Number **LG805646863**  
Description **LABORATORY GROWN DIAMOND**  
Shape and Cutting Style **SQUARE CUSHION MODIFIED BRILLIANT**  
Measurements **7.33 X 7.18 X 4.72 MM**  
**GRADING RESULTS**  
Carat Weight **2.02 CARATS**  
Color Grade **F**  
Clarity Grade **VS 1**  
Cut Grade **VERY GOOD**

**PROPORTIONS**



Sample Image Used



**ADDITIONAL GRADING INFORMATION**

Polish **EXCELLENT**  
Symmetry **EXCELLENT**  
Fluorescence **NONE**  
Inscription(s) **IGI LG805646863**

Comments: This Laboratory Grown Diamond was created by Chemical Vapor Deposition (CVD) growth process. Type IIa

**COLOR**

D E F G H I J Faint Very Light Light

**CLARITY**

FL	IF	VS <sup>1-2</sup>	VS <sup>1-2</sup>	SI <sup>1-2</sup>	I <sup>1-3</sup>
Flawless	Internally Flawless	Very Very Slightly Included	Very Slightly Included	Slightly Included	Included

**ADDITIONAL GRADING INFORMATION**

Polish **EXCELLENT**  
Symmetry **EXCELLENT**  
Fluorescence **NONE**  
Inscription(s) **IGI LG805646863**  
Comments: This Laboratory Grown Diamond was created by Chemical Vapor Deposition (CVD) growth process. Type IIa



**IGI**



May 28, 2026  
IGI Report No **LG805646863**  
**SQUARE CUSHION MODIFIED BRILLIANT**  
**7.33 X 7.18 X 4.72 MM**  
Carat Weight **2.02 CARATS**  
Color Grade **F**  
Clarity Grade **VS 1**  
Cut Grade **VERY GOOD**  
Depth **66.7%**  
Table **61%**  
Girdle **Medium To Thick (Faceted)**  
Culet **Pointed**  
Polish **EXCELLENT**  
Symmetry **EXCELLENT**  
Fluorescence **NONE**  
Inscriptions(s) **IGI LG805646863**  
Comments: This Laboratory Grown Diamond was created by Chemical Vapor Deposition (CVD) growth process. Type IIa