



ELECTRONIC COPY

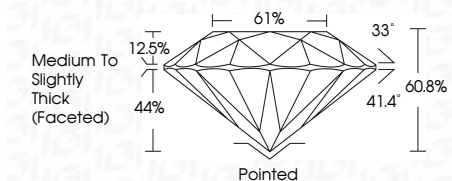
LG805644946 Report verification at igi.org



May 28, 2026 IGI Report Number LG805644946 Description LABORATORY GROWN DIAMOND Shape and Cutting Style ROUND BRILLIANT Measurements 6.42 - 6.46 X 3.92 MM

GRADING RESULTS

Carat Weight 1.01 CARAT Color Grade E Clarity Grade VVS 1 Cut Grade EXCELLENT



ADDITIONAL GRADING INFORMATION

Polish EXCELLENT Symmetry EXCELLENT Fluorescence NONE Inscription(s) IGI LG805644946 Comments: This Laboratory Grown Diamond was created by Chemical Vapor Deposition (CVD) growth process. Type IIa



May 28, 2026 IGI Report No LG805644946 ROUND BRILLIANT 1.01 CARAT E VVS 1 EXCELLENT 60.8% 61% Medium To Slightly Thick (Faceted) Pointed EXCELLENT EXCELLENT NONE IGI LG805644946 Comments: This Laboratory Grown Diamond was created by Chemical Vapor Deposition (CVD) growth process. Type IIa

LABORATORY GROWN DIAMOND REPORT

May 28, 2026 IGI Report Number LG805644946 Description LABORATORY GROWN DIAMOND Shape and Cutting Style ROUND BRILLIANT Measurements 6.42 - 6.46 X 3.92 MM

GRADING RESULTS

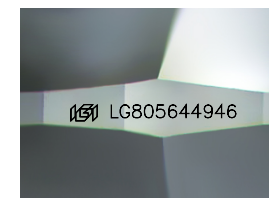
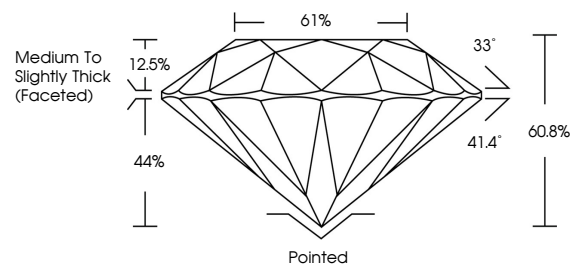
Carat Weight 1.01 CARAT Color Grade E Clarity Grade VVS 1 Cut Grade EXCELLENT

ADDITIONAL GRADING INFORMATION

Polish EXCELLENT Symmetry EXCELLENT Fluorescence NONE Inscription(s) IGI LG805644946

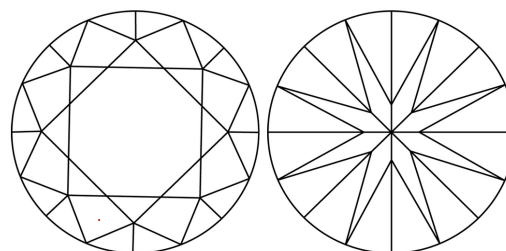
Comments: This Laboratory Grown Diamond was created by Chemical Vapor Deposition (CVD) growth process. Type IIa

PROPORTIONS



Sample Image Used

CLARITY CHARACTERISTICS



KEY TO SYMBOLS

Red symbols indicate internal characteristics. Green symbols indicate external characteristics.

COLOR

D E F G H I J Faint Very Light Light

CLARITY

FL IF VVS 1-2 VS 1-2 SI 1-2 I 1-3 Flawless Internally Flawless Very Very Slightly Included Very Slightly Included Slightly Included Included

