



**ELECTRONIC COPY**

LG805643293  
Report verification at igi.org



May 28, 2026

IGI Report Number **LG805643293**

Description **LABORATORY GROWN DIAMOND**

Shape and Cutting Style **HALF MOON BRILLIANT**

Measurements **10.64 X 7.00 X 4.63 MM**

**GRADING RESULTS**

Carat Weight **2.30 CARATS**

Color Grade **E**

Clarity Grade **VS 1**

May 28, 2026

IGI Report Number **LG805643293**

Description **LABORATORY GROWN DIAMOND**

Shape and Cutting Style **HALF MOON BRILLIANT**

Measurements **10.64 X 7.00 X 4.63 MM**

**GRADING RESULTS**

Carat Weight **2.30 CARATS**

Color Grade **E**

Clarity Grade **VS 1**

**ADDITIONAL GRADING INFORMATION**

Polish **EXCELLENT**

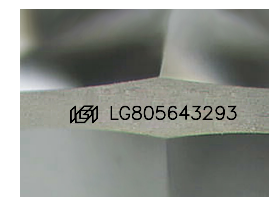
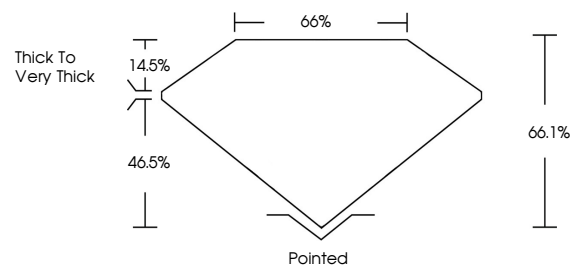
Symmetry **EXCELLENT**

Fluorescence **NONE**

Inscription(s) **IGI LG805643293**

Comments: This Laboratory Grown Diamond was created by Chemical Vapor Deposition (CVD) growth process.  
Type IIa

**PROPORTIONS**



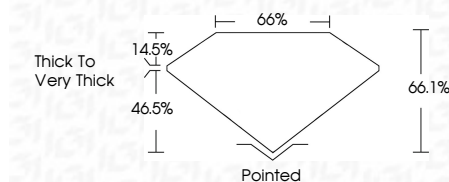
Sample Image Used

**COLOR**

D E F G H I J Faint Very Light Light

**CLARITY**

FL	IF	VS <sup>1-2</sup>	VS <sup>1-2</sup>	SI <sup>1-2</sup>	I <sup>1-3</sup>
Flawless	Internally Flawless	Very Very Slightly Included	Very Slightly Included	Slightly Included	Included



**ADDITIONAL GRADING INFORMATION**

Polish **EXCELLENT**

Symmetry **EXCELLENT**

Fluorescence **NONE**

Inscription(s) **IGI LG805643293**

Comments: This Laboratory Grown Diamond was created by Chemical Vapor Deposition (CVD) growth process.  
Type IIa



May 28, 2026  
IGI Report No LG805643293  
**HALF MOON BRILLIANT**  
10.64 X 7.00 X 4.63 MM  
2.30 CARATS  
E  
Color Grade  
VS 1  
Depth 66.1%  
Table 66%  
Girdle  
Thick to Very Thick  
Pointed  
Culet  
Polish EXCELLENT  
Symmetry EXCELLENT  
Fluorescence NONE  
Inscription(s) IGI LG805643293  
Comments: This Laboratory Grown Diamond was created by Chemical Vapor Deposition (CVD) growth process.  
Type IIa