



ELECTRONIC COPY

LG805640874 Report verification at igi.org



May 28, 2026 IGI Report Number LG805640874 Description LABORATORY GROWN DIAMOND Shape and Cutting Style OVAL BRILLIANT Measurements 9.02 X 6.12 X 3.71 MM GRADING RESULTS Carat Weight 1.29 CARAT Color Grade E Clarity Grade INTERNALLY FLAWLESS

LABORATORY GROWN DIAMOND REPORT

May 28, 2026 IGI Report Number LG805640874 Description LABORATORY GROWN DIAMOND Shape and Cutting Style OVAL BRILLIANT Measurements 9.02 X 6.12 X 3.71 MM

GRADING RESULTS

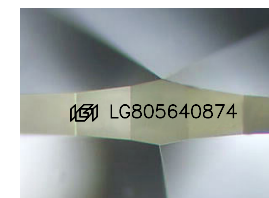
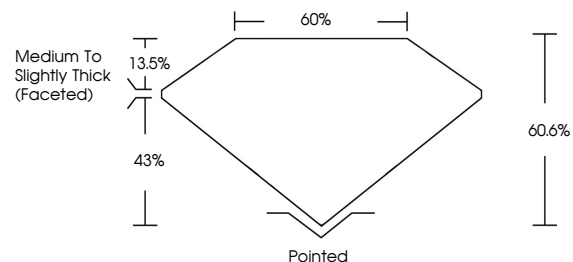
Carat Weight 1.29 CARAT Color Grade E Clarity Grade INTERNALLY FLAWLESS

ADDITIONAL GRADING INFORMATION

Polish EXCELLENT Symmetry EXCELLENT Fluorescence NONE Inscription(s) IGI LG805640874

Comments: This Laboratory Grown Diamond was created by Chemical Vapor Deposition (CVD) growth process. Type IIa

PROPORTIONS



Sample Image Used

CLARITY CHARACTERISTICS



KEY TO SYMBOLS

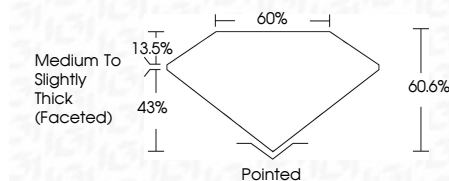
Red symbols indicate internal characteristics. Green symbols indicate external characteristics.

COLOR

D E F G H I J Faint Very Light Light

CLARITY

FL IF VS 1-2 VS 1-2 SI 1-2 I 1-3 Flawless Internally Flawless Very Very Slightly Included Very Slightly Included Slightly Included Included



ADDITIONAL GRADING INFORMATION

Polish EXCELLENT Symmetry EXCELLENT Fluorescence NONE Inscription(s) IGI LG805640874 Comments: This Laboratory Grown Diamond was created by Chemical Vapor Deposition (CVD) growth process. Type IIa



Certified SUSTAINABILITY RATED DIAMOND SCS GLOBAL SERVICES All certified diamonds come with an individual certificate, ONLY available at an accredited retailer. QR code and 'FOR THE SUSTAINABILITY RATED CERTIFICATE, SCAN HERE' text.

THIS DOCUMENT WAS PRODUCED WITH THE FOLLOWING SECURITY MEASURES: SPECIAL DOCUMENT PAPER, INK SCREENS, WATERMARK BACKGROUND DESIGNS, HOLOGRAM AND OTHER SECURITY FEATURES NOT LISTED AND DO EXCEED DOCUMENT SECURITY INDUSTRY GUIDELINES.

Summary of report details: May 28, 2026, IGI Report No. LG805640874, OVAL BRILLIANT, 9.02 X 6.12 X 3.71 MM, 1.29 CARAT, E, 60.6%, 43%, Medium to Slightly Thick (Faceted), Pointed, EXCELLENT, EXCELLENT, NONE, IGI LG805640874. Comments: This Laboratory Grown Diamond was created by Chemical Vapor Deposition (CVD) growth process. Type IIa