



ELECTRONIC COPY

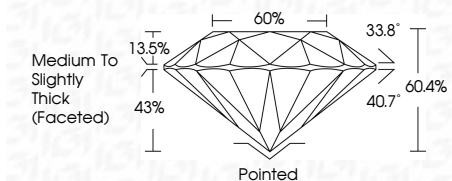
LG805639771 Report verification at igi.org



June 4, 2026 IGI Report Number LG805639771 Description LABORATORY GROWN DIAMOND Shape and Cutting Style ROUND BRILLIANT Measurements 8.23 - 8.29 X 4.98 MM

GRADING RESULTS

Carat Weight 2.08 CARATS Color Grade E Clarity Grade VVS 2 Cut Grade IDEAL



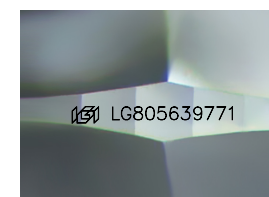
ADDITIONAL GRADING INFORMATION

Polish EXCELLENT Symmetry EXCELLENT Fluorescence NONE Inscription(s) IGI LG805639771 Comments: This Laboratory Grown Diamond was created by Chemical Vapor Deposition (CVD) growth process. Type IIa



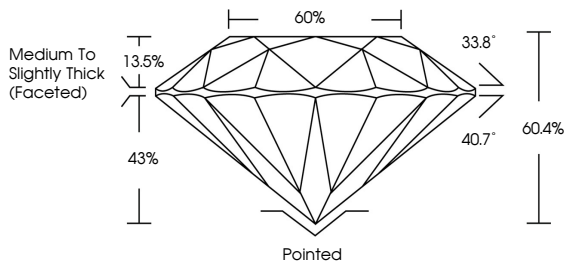
June 4, 2026 IGI Report No. LG805639771 ROUND BRILLIANT 8.23 - 8.29 X 4.98 MM 2.08 CARATS E Color Grade VVS 2 IDEAL 60.4% 60% Medium To Slightly Thick (Faceted) Pointed EXCELLENT EXCELLENT NONE IGI LG805639771

Comments: This Laboratory Grown Diamond was created by Chemical Vapor Deposition (CVD) growth process. Type IIa

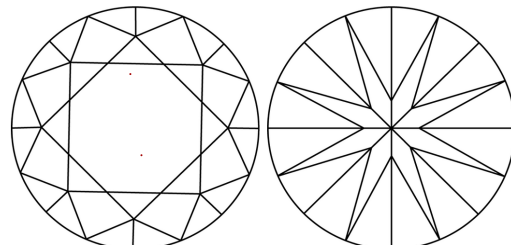


Sample Image Used

PROPORTIONS



CLARITY CHARACTERISTICS



KEY TO SYMBOLS

Red symbols indicate internal characteristics. Green symbols indicate external characteristics.

COLOR

Table with color grades: D, E, F, G, H, I, J, Faint, Very Light, Light

CLARITY

Table with clarity grades: FL, IF, VVS 1-2, VS 1-2, SI 1-2, I 1-3, Flawless, Internally Flawless, Very Very Slightly Included, Very Slightly Included, Slightly Included, Included



June 4, 2026 IGI Report Number LG805639771 Description LABORATORY GROWN DIAMOND Shape and Cutting Style ROUND BRILLIANT Measurements 8.23 - 8.29 X 4.98 MM

GRADING RESULTS

Carat Weight 2.08 CARATS Color Grade E Clarity Grade VVS 2 Cut Grade IDEAL

ADDITIONAL GRADING INFORMATION

Polish EXCELLENT Symmetry EXCELLENT Fluorescence NONE Inscription(s) IGI LG805639771

Comments: This Laboratory Grown Diamond was created by Chemical Vapor Deposition (CVD) growth process. Type IIa