



ELECTRONIC COPY

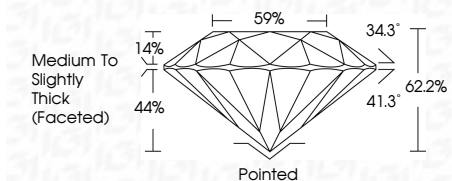
LG805639751 Report verification at igi.org



June 2, 2026 IGI Report Number LG805639751 Description LABORATORY GROWN DIAMOND Shape and Cutting Style ROUND BRILLIANT Measurements 6.57 - 6.61 X 4.10 MM

GRADING RESULTS

Carat Weight 1.10 CARAT Color Grade E Clarity Grade VVS 2 Cut Grade EXCELLENT



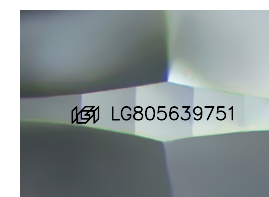
ADDITIONAL GRADING INFORMATION

Polish EXCELLENT Symmetry EXCELLENT Fluorescence NONE Inscription(s) IGI LG805639751 Comments: This Laboratory Grown Diamond was created by Chemical Vapor Deposition (CVD) growth process. Type IIa



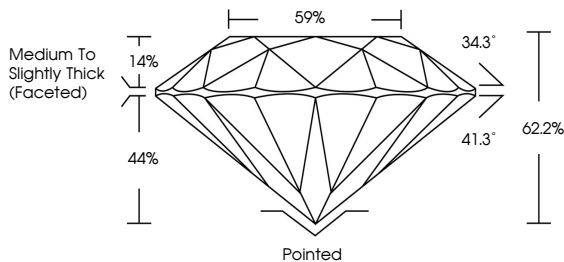
June 2, 2026 IGI Report No LG805639751 ROUND BRILLIANT 6.57 - 6.61 X 4.10 MM 1.10 CARAT E Color Grade EXCELLENT VVS 2 Clarity Grade EXCELLENT W 62.2% Depth 59% Table Medium To Slightly Thick (Faceted) Pavilion Pointed EXCELLENT Crown 34.3° EXCELLENT Symmetry EXCELLENT Fluorescence NONE Cut Grade EXCELLENT 41.3° 62.2% 14% 44% IGI LG805639751

Comments: This Laboratory Grown Diamond was created by Chemical Vapor Deposition (CVD) growth process. Type IIa

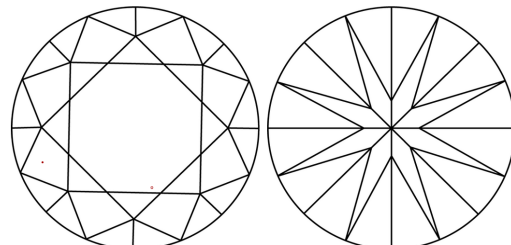


Sample Image Used

PROPORTIONS



CLARITY CHARACTERISTICS



KEY TO SYMBOLS Red symbols indicate internal characteristics. Green symbols indicate external characteristics.

COLOR

Color scale from D to J, with Faint, Very Light, and Light labels.

CLARITY

Clarity scale from FL to I 1-3, with sub-labels: Internally Flawless, Very Very Slightly Included, Very Slightly Included, Slightly Included, Included.



June 2, 2026 IGI Report Number LG805639751 Description LABORATORY GROWN DIAMOND Shape and Cutting Style ROUND BRILLIANT Measurements 6.57 - 6.61 X 4.10 MM

GRADING RESULTS

Carat Weight 1.10 CARAT Color Grade E Clarity Grade VVS 2 Cut Grade EXCELLENT

ADDITIONAL GRADING INFORMATION

Polish EXCELLENT Symmetry EXCELLENT Fluorescence NONE Inscription(s) IGI LG805639751

Comments: This Laboratory Grown Diamond was created by Chemical Vapor Deposition (CVD) growth process. Type IIa