



**ELECTRONIC COPY**

LG805638173  
Report verification at igi.org

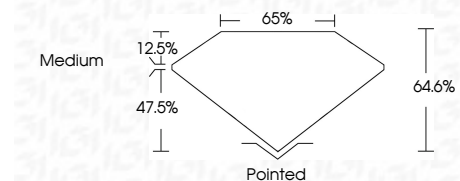


May 27, 2026  
IGI Report Number **LG805638173**  
Description **LABORATORY GROWN DIAMOND**  
Shape and Cutting Style **CUT CORNERED  
RECTANGULAR MODIFIED  
BRILLIANT**

Measurements **11.49 X 7.88 X 5.09 MM**

**GRADING RESULTS**

Carat Weight **4.05 CARATS**  
Color Grade **E**  
Clarity Grade **VVS 2**



**ADDITIONAL GRADING INFORMATION**

Polish **EXCELLENT**  
Symmetry **EXCELLENT**  
Fluorescence **NONE**  
Inscription(s) **IGI LG805638173**  
Comments: This Laboratory Grown Diamond was created by Chemical Vapor Deposition (CVD) growth process. Type IIa



May 27, 2026  
IGI Report No. LG805638173  
CUT CORNERED RECT. MODIFIED BRILLIANT  
4.05 CARATS  
E  
VVS 2  
64.6%  
65%  
Medium  
Pointed  
EXCELLENT  
EXCELLENT  
NONE  
IGI LG805638173  
Comments: This Laboratory Grown Diamond was created by Chemical Vapor Deposition (CVD) growth process. Type IIa

**LABORATORY GROWN DIAMOND REPORT**

May 27, 2026  
IGI Report Number **LG805638173**  
Description **LABORATORY GROWN DIAMOND**  
Shape and Cutting Style **CUT CORNERED RECTANGULAR  
MODIFIED BRILLIANT**  
Measurements **11.49 X 7.88 X 5.09 MM**

**GRADING RESULTS**

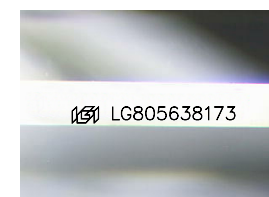
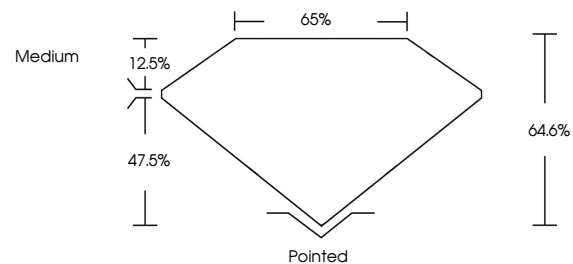
Carat Weight **4.05 CARATS**  
Color Grade **E**  
Clarity Grade **VVS 2**

**ADDITIONAL GRADING INFORMATION**

Polish **EXCELLENT**  
Symmetry **EXCELLENT**  
Fluorescence **NONE**  
Inscription(s) **IGI LG805638173**

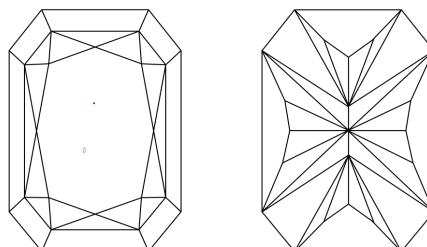
Comments: This Laboratory Grown Diamond was created by Chemical Vapor Deposition (CVD) growth process. Type IIa

**PROPORTIONS**



Sample Image Used

**CLARITY CHARACTERISTICS**



**KEY TO SYMBOLS**

Red symbols indicate internal characteristics.  
Green symbols indicate external characteristics.

**COLOR**

D E F G H I J Faint Very Light Light

**CLARITY**

FL	IF	VVS <sup>1-2</sup>	VS <sup>1-2</sup>	SI <sup>1-2</sup>	I <sup>1-3</sup>
Flawless	Internally Flawless	Very Very Slightly Included	Very Slightly Included	Slightly Included	Included

