



ELECTRONIC COPY

LG805637977
Report verification at igi.org



May 30, 2026
IGI Report Number **LG805637977**
Description **LABORATORY GROWN DIAMOND**
Shape and Cutting Style **SQUARE CUSHION MODIFIED BRILLIANT**
Measurements **8.58 X 8.18 X 5.01 MM**
GRADING RESULTS
Carat Weight **3.03 CARATS**
Color Grade **FANCY INTENSE YELLOW**
Clarity Grade **VVS 2**

LABORATORY GROWN DIAMOND REPORT

May 30, 2026
IGI Report Number **LG805637977**
Description **LABORATORY GROWN DIAMOND**
Shape and Cutting Style **SQUARE CUSHION MODIFIED BRILLIANT**
Measurements **8.58 X 8.18 X 5.01 MM**

GRADING RESULTS

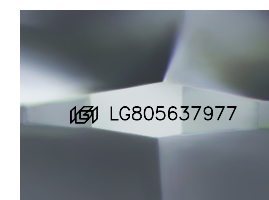
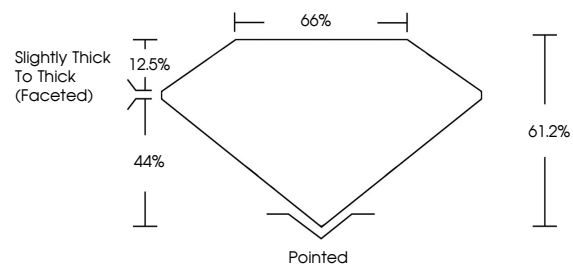
Carat Weight **3.03 CARATS**
Color Grade **FANCY INTENSE YELLOW**
Clarity Grade **VVS 2**

ADDITIONAL GRADING INFORMATION

Polish **EXCELLENT**
Symmetry **EXCELLENT**
Fluorescence **NONE**
Inscription(s) **IGI LG805637977**

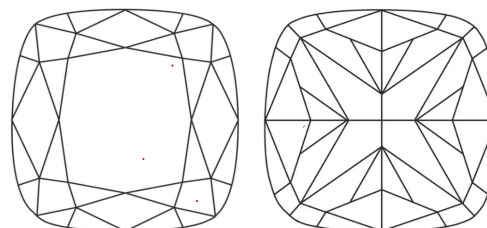
Comments: This Laboratory Grown Diamond was created by Chemical Vapor Deposition (CVD) growth process.

PROPORTIONS



Sample Image Used

CLARITY CHARACTERISTICS



KEY TO SYMBOLS

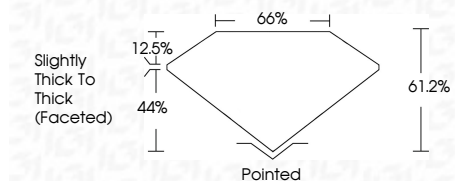
Red symbols indicate internal characteristics.
Green symbols indicate external characteristics.

COLOR

D E F G H I J Faint Very Light Light

CLARITY

FL	IF	VVS ¹⁻²	VS ¹⁻²	SI ¹⁻²	I ¹⁻³
Flawless	Internally Flawless	Very Very Slightly Included	Very Slightly Included	Slightly Included	Included



ADDITIONAL GRADING INFORMATION

Polish **EXCELLENT**
Symmetry **EXCELLENT**
Fluorescence **NONE**
Inscription(s) **IGI LG805637977**
Comments: This Laboratory Grown Diamond was created by Chemical Vapor Deposition (CVD) growth process.



IGI



May 30, 2026
IGI Report No. **LG805637977**
SQUARE CUSHION MODIFIED BRILLIANT
8.58 X 8.18 X 5.01 MM
Carat Weight **3.03 CARATS**
Color Grade **FANCY INTENSE YELLOW**
Clarity Grade **VVS 2**
Depth **61.2%**
Table **66%**
Girdle **Slightly Thick To Thick (Faceted)**
Culet **Pointed**
Polish **EXCELLENT**
Symmetry **EXCELLENT**
Fluorescence **NONE**
Inscription(s) **IGI LG805637977**
Comments: This Laboratory Grown Diamond was created by Chemical Vapor Deposition (CVD) growth process.