



**ELECTRONIC COPY**

LG805636546  
Report verification at igi.org



June 10, 2026  
IGI Report Number **LG805636546**  
Description **LABORATORY GROWN DIAMOND**  
Shape and Cutting Style **ROUND BRILLIANT**  
Measurements **8.18 - 8.22 X 5.10 MM**  
**GRADING RESULTS**  
Carat Weight **2.15 CARATS**  
Color Grade **FANCY VIVID PINK**  
Clarity Grade **SI 2**  
Cut Grade **EXCELLENT**

June 10, 2026  
IGI Report Number **LG805636546**  
Description **LABORATORY GROWN DIAMOND**  
Shape and Cutting Style **ROUND BRILLIANT**  
Measurements **8.18 - 8.22 X 5.10 MM**

**GRADING RESULTS**

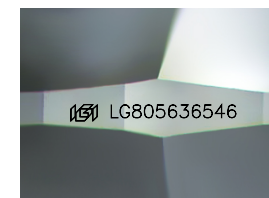
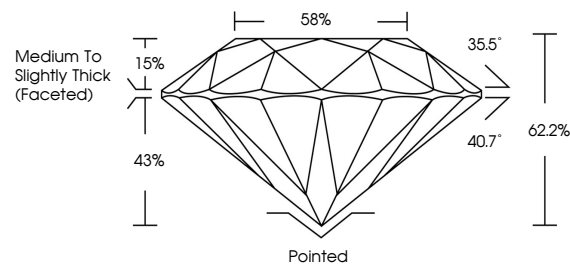
Carat Weight **2.15 CARATS**  
Color Grade **FANCY VIVID PINK**  
Clarity Grade **SI 2**  
Cut Grade **EXCELLENT**

**ADDITIONAL GRADING INFORMATION**

Polish **EXCELLENT**  
Symmetry **EXCELLENT**  
Fluorescence **STRONG**  
Inscription(s) **LG805636546**

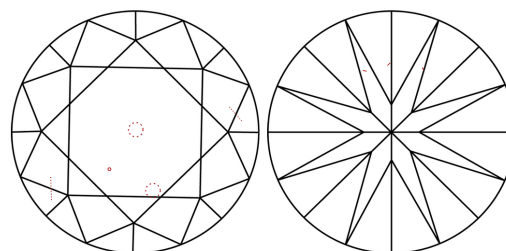
Comments: This Laboratory Grown Diamond was created by Chemical Vapor Deposition (CVD) growth process.  
Indications of post-growth treatment.

**PROPORTIONS**



Sample Image Used

**CLARITY CHARACTERISTICS**



**KEY TO SYMBOLS**

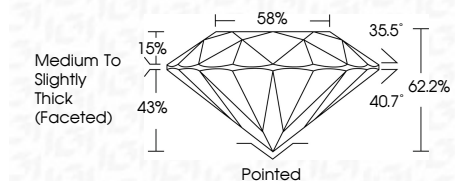
Red symbols indicate internal characteristics.  
Green symbols indicate external characteristics.

**COLOR**

D E F G H I J Faint Very Light Light

**CLARITY**

FL	IF	VS <sup>1-2</sup>	VS <sup>1-2</sup>	SI <sup>1-2</sup>	I <sup>1-3</sup>
Flawless	Internally Flawless	Very Very Slightly Included	Very Slightly Included	Slightly Included	Included



**ADDITIONAL GRADING INFORMATION**

Polish **EXCELLENT**  
Symmetry **EXCELLENT**  
Fluorescence **STRONG**  
Inscription(s) **LG805636546**  
Comments: This Laboratory Grown Diamond was created by Chemical Vapor Deposition (CVD) growth process.  
Indications of post-growth treatment.



June 10, 2026  
IGI Report No. **LG805636546**  
**ROUND BRILLIANT**  
**8.18 - 8.22 X 5.10 MM**  
Carat Weight **2.15 CARATS**  
Color Grade **FANCY VIVID PINK**  
Clarity Grade **SI 2**  
Cut Grade **EXCELLENT**  
Depth **62.2%**  
Table **58%**  
Girdle **Medium To Slightly Thick (Faceted)**  
Culet **Pointed**  
Polish **EXCELLENT**  
Symmetry **EXCELLENT**  
Fluorescence **STRONG**  
Inscriptions(s) **LG805636546**  
Comments: This Laboratory Grown Diamond was created by Chemical Vapor Deposition (CVD) growth process.  
Indications of post-growth treatment.