



**ELECTRONIC COPY**

LG805636520  
Report verification at [igi.org](http://igi.org)



June 10, 2026  
IGI Report Number **LG805636520**  
Description **LABORATORY GROWN DIAMOND**  
Shape and Cutting Style **CUSHION MODIFIED BRILLIANT**  
Measurements **6.34 X 5.36 X 3.62 MM**  
**GRADING RESULTS**  
Carat Weight **1.03 CARAT**  
Color Grade **FANCY VIVID PINK**  
Clarity Grade **SI 2**

**LABORATORY GROWN DIAMOND REPORT**

June 10, 2026  
IGI Report Number **LG805636520**  
Description **LABORATORY GROWN DIAMOND**  
Shape and Cutting Style **CUSHION MODIFIED BRILLIANT**  
Measurements **6.34 X 5.36 X 3.62 MM**

**GRADING RESULTS**

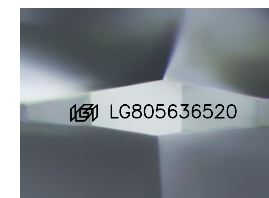
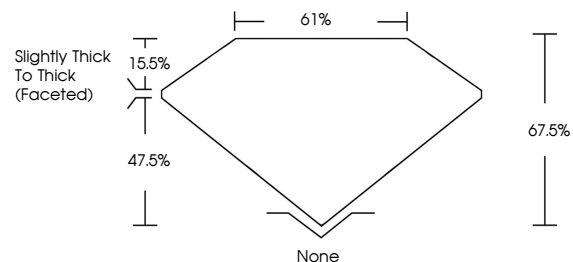
Carat Weight **1.03 CARAT**  
Color Grade **FANCY VIVID PINK**  
Clarity Grade **SI 2**

**ADDITIONAL GRADING INFORMATION**

Polish **VERY GOOD**  
Symmetry **GOOD**  
Fluorescence **STRONG**  
Inscription(s) **LG805636520**

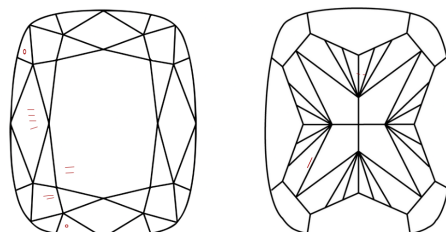
Comments: This Laboratory Grown Diamond was created by High Pressure High Temperature (HPHT) growth process.  
Indications of post-growth treatment.

**PROPORTIONS**



Sample Image Used

**CLARITY CHARACTERISTICS**



**KEY TO SYMBOLS**

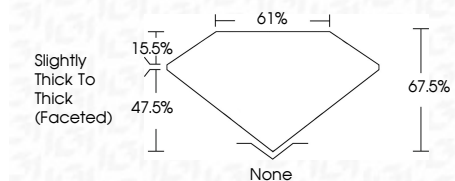
Red symbols indicate internal characteristics.  
Green symbols indicate external characteristics.

**COLOR**

D E F G H I J Faint Very Light Light

**CLARITY**

FL	IF	VS <sup>1-2</sup>	VS <sup>1-2</sup>	SI <sup>1-2</sup>	I <sup>1-3</sup>
Flawless	Internally Flawless	Very Very Slightly Included	Very Slightly Included	Slightly Included	Included



**ADDITIONAL GRADING INFORMATION**

Polish **VERY GOOD**  
Symmetry **GOOD**  
Fluorescence **STRONG**  
Inscription(s) **LG805636520**  
Comments: This Laboratory Grown Diamond was created by High Pressure High Temperature (HPHT) growth process.  
Indications of post-growth treatment.



June 10, 2026  
IGI Report No **LG805636520**  
**CUSHION MODIFIED BRILLIANT**  
**6.34 X 5.36 X 3.62 MM**  
Carat Weight **1.03 CARAT**  
Color Grade **FANCY VIVID PINK**  
Clarity Grade **SI 2**  
Depth **67.5%**  
Table **61%**  
Girdle **Slightly Thick To Thick (Faceted)**  
Culet **None**  
Polish **VERY GOOD**  
Symmetry **GOOD**  
Fluorescence **STRONG**  
Inscription(s) **LG805636520**  
Comments: This Laboratory Grown Diamond was created by High Pressure High Temperature (HPHT) growth process.  
Indications of post-growth treatment.