



ELECTRONIC COPY

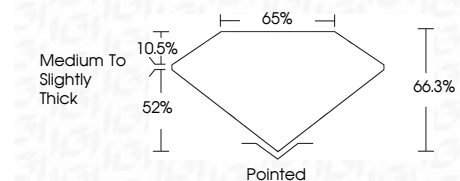
LG805636493
Report verification at igi.org



June 9, 2026
IGI Report Number **LG805636493**
Description **LABORATORY GROWN DIAMOND**
Shape and Cutting Style **CUT CORNERED
RECTANGULAR MODIFIED
BRILLIANT**
Measurements **6.78 X 4.95 X 3.28 MM**

GRADING RESULTS

Carat Weight **1.01 CARAT**
Color Grade **FANCY DEEP PINK**
Clarity Grade **VS 2**



ADDITIONAL GRADING INFORMATION

Polish **VERY GOOD**
Symmetry **EXCELLENT**
Fluorescence **SLIGHT**
Inscription(s) **IGI LG805636493**

Comments: This Laboratory Grown Diamond was created by Chemical Vapor Deposition (CVD) growth process. Indications of post-growth treatment.



June 9, 2026
IGI Report No. **LG805636493**
CUT CORNERED RECT. MODIFIED BRILLIANT
6.78 X 4.95 X 3.28 MM
1.01 CARAT
FANCY DEEP PINK
VS 2
66.3%
52%
Medium to Slightly Thick
Pointed
VERY GOOD
EXCELLENT
SLIGHT
IGI LG805636493

Comments: This Laboratory Grown Diamond was created by Chemical Vapor Deposition (CVD) growth process. Indications of post-growth treatment.

LABORATORY GROWN DIAMOND REPORT

June 9, 2026
IGI Report Number **LG805636493**
Description **LABORATORY GROWN DIAMOND**
Shape and Cutting Style **CUT CORNERED RECTANGULAR
MODIFIED BRILLIANT**
Measurements **6.78 X 4.95 X 3.28 MM**

GRADING RESULTS

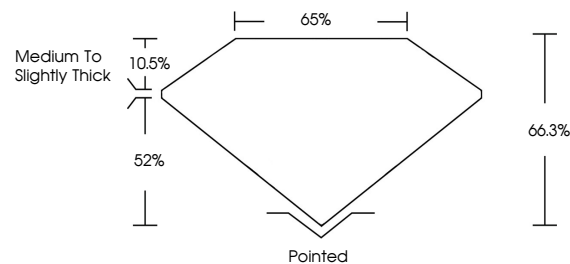
Carat Weight **1.01 CARAT**
Color Grade **FANCY DEEP PINK**
Clarity Grade **VS 2**

ADDITIONAL GRADING INFORMATION

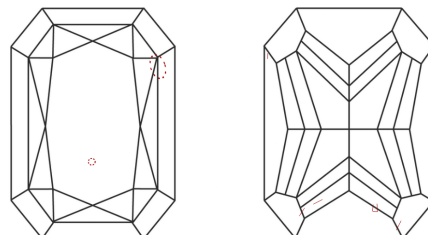
Polish **VERY GOOD**
Symmetry **EXCELLENT**
Fluorescence **SLIGHT**
Inscription(s) **IGI LG805636493**

Comments: This Laboratory Grown Diamond was created by Chemical Vapor Deposition (CVD) growth process. Indications of post-growth treatment.

PROPORTIONS

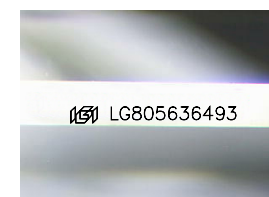


CLARITY CHARACTERISTICS



KEY TO SYMBOLS

Red symbols indicate internal characteristics.
Green symbols indicate external characteristics.



Sample Image Used

COLOR

D E F G H I J Faint Very Light Light

CLARITY

FL	IF	VS ¹⁻²	VS ¹⁻²	SI ¹⁻²	I ¹⁻³
Flawless	Internally Flawless	Very Very Slightly Included	Very Slightly Included	Slightly Included	Included

