



ELECTRONIC COPY

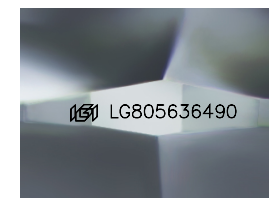
LG805636490
Report verification at igi.org



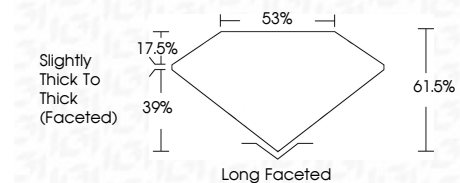
June 9, 2026
IGI Report Number **LG805636490**
Description **LABORATORY GROWN DIAMOND**
Shape and Cutting Style **CUSHION BRILLIANT**
Measurements **9.40 X 6.13 X 3.77 MM**

GRADING RESULTS

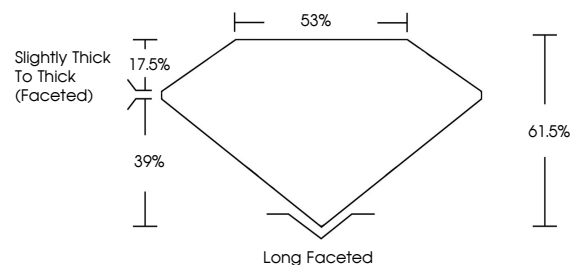
Carat Weight **1.87 CARAT**
Color Grade **F**
Clarity Grade **VS 2**



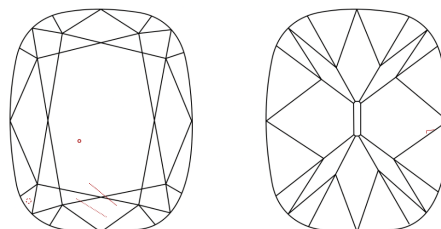
Sample Image Used



PROPORTIONS



CLARITY CHARACTERISTICS



KEY TO SYMBOLS

Red symbols indicate internal characteristics.
Green symbols indicate external characteristics.

COLOR

D E F G H I J Faint Very Light Light

CLARITY

| FL | IF | VS ¹⁻² | VS ¹⁻² | SI ¹⁻² | I ¹⁻³ |
|----------|---------------------|-----------------------------|------------------------|-------------------|------------------|
| Flawless | Internally Flawless | Very Very Slightly Included | Very Slightly Included | Slightly Included | Included |

ADDITIONAL GRADING INFORMATION

Polish **EXCELLENT**
Symmetry **EXCELLENT**
Fluorescence **NONE**
Inscription(s) **IGI LG805636490**
Comments: This Laboratory Grown Diamond was created by Chemical Vapor Deposition (CVD) growth process. Type IIa



IGI



June 9, 2026
IGI Report No. **LG805636490**
CUSHION BRILLIANT
9.40 X 6.13 X 3.77 MM
Carat Weight **1.87 CARAT**
Color Grade **F**
Clarity Grade **VS 2**
Depth **61.6%**
Table **53%**
Girdle **Slightly Thick To Thick (Faceted)**
Culet **Long Faceted**
Polish **EXCELLENT**
Symmetry **EXCELLENT**
Fluorescence **NONE**
Inscription(s) **IGI LG805636490**
Comments: This Laboratory Grown Diamond was created by Chemical Vapor Deposition (CVD) growth process. Type IIa