



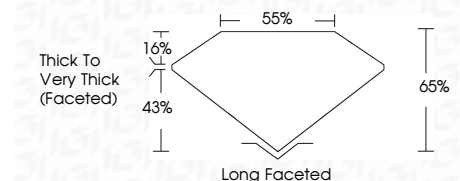
ELECTRONIC COPY

LG805636448
Report verification at igi.org



June 10, 2026
IGI Report Number **LG805636448**
Description **LABORATORY GROWN DIAMOND**
Shape and Cutting Style **CUSHION BRILLIANT**
Measurements **10.39 X 7.39 X 4.80 MM**

GRADING RESULTS
Carat Weight **3.02 CARATS**
Color Grade **VERY LIGHT GRAYISH YELLOW**
Clarity Grade **VS 2**



ADDITIONAL GRADING INFORMATION
Polish **EXCELLENT**
Symmetry **EXCELLENT**
Fluorescence **NONE**
Inscription(s) **IGI LG805636448**
Comments: This Laboratory Grown Diamond was created by Chemical Vapor Deposition (CVD) growth process. Type IIa



June 10, 2026
IGI Report No. LG805636448
CUSHION BRILLIANT
3.02 CARATS
Carat Weight
Color Grade **VERY LIGHT GRAYISH YELLOW**
Clarity Grade **VS 2**
Depth **65%**
Table **65%**
Girdle
Thick to Very Thick (Faceted)
Culet **Long Faceted**
Polish **EXCELLENT**
Symmetry **EXCELLENT**
Fluorescence **NONE**
Inscription(s) **IGI LG805636448**
Comments: This Laboratory Grown Diamond was created by Chemical Vapor Deposition (CVD) growth process. Type IIa

LABORATORY GROWN DIAMOND REPORT

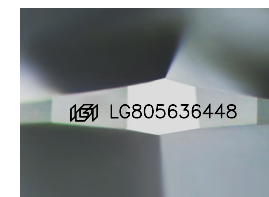
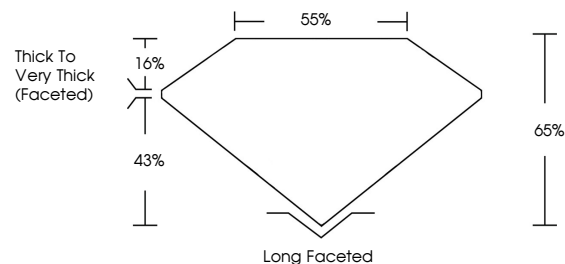
June 10, 2026
IGI Report Number **LG805636448**
Description **LABORATORY GROWN DIAMOND**
Shape and Cutting Style **CUSHION BRILLIANT**
Measurements **10.39 X 7.39 X 4.80 MM**

GRADING RESULTS
Carat Weight **3.02 CARATS**
Color Grade **VERY LIGHT GRAYISH YELLOW**
Clarity Grade **VS 2**

ADDITIONAL GRADING INFORMATION
Polish **EXCELLENT**
Symmetry **EXCELLENT**
Fluorescence **NONE**
Inscription(s) **IGI LG805636448**

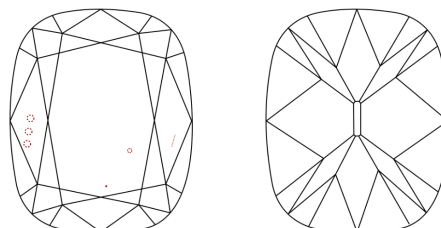
Comments: This Laboratory Grown Diamond was created by Chemical Vapor Deposition (CVD) growth process. Type IIa

PROPORTIONS



Sample Image Used

CLARITY CHARACTERISTICS



KEY TO SYMBOLS

Red symbols indicate internal characteristics.
Green symbols indicate external characteristics.

COLOR

D E F G H I J Faint Very Light Light

CLARITY

FL	IF	VS ¹⁻²	VS ¹⁻²	SI ¹⁻²	I ¹⁻³
Flawless	Internally Flawless	Very Very Slightly Included	Very Slightly Included	Slightly Included	Included

