



**ELECTRONIC COPY**

LG805636426  
Report verification at igi.org



June 8, 2026  
IGI Report Number **LG805636426**  
Description **LABORATORY GROWN DIAMOND**  
Shape and Cutting Style **CUSHION BRILLIANT**  
Measurements **10.28 X 7.22 X 4.94 MM**  
**GRADING RESULTS**  
Carat Weight **3.01 CARATS**  
Color Grade **VERY LIGHT BROWN**  
Clarity Grade **VS 2**

June 8, 2026  
IGI Report Number **LG805636426**  
Description **LABORATORY GROWN DIAMOND**  
Shape and Cutting Style **CUSHION BRILLIANT**  
Measurements **10.28 X 7.22 X 4.94 MM**

**GRADING RESULTS**

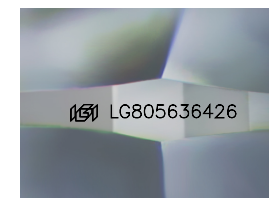
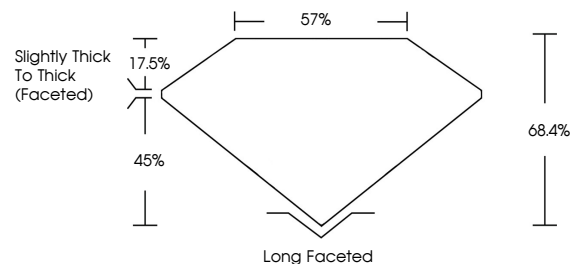
Carat Weight **3.01 CARATS**  
Color Grade **VERY LIGHT BROWN**  
Clarity Grade **VS 2**

**ADDITIONAL GRADING INFORMATION**

Polish **EXCELLENT**  
Symmetry **EXCELLENT**  
Fluorescence **NONE**  
Inscription(s) **IGI LG805636426**

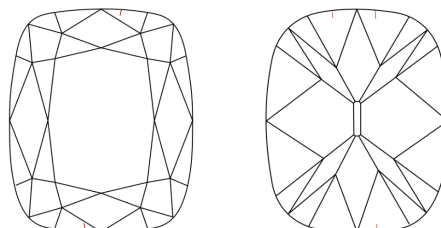
Comments: This Laboratory Grown Diamond was created by Chemical Vapor Deposition (CVD) growth process. Type IIa

**PROPORTIONS**



Sample Image Used

**CLARITY CHARACTERISTICS**



**KEY TO SYMBOLS**

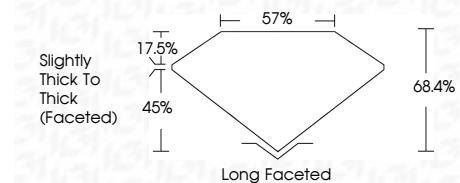
Red symbols indicate internal characteristics.  
Green symbols indicate external characteristics.

**COLOR**

D E F G H I J Faint Very Light Light

**CLARITY**

FL	IF	VS <sup>1-2</sup>	VS <sup>1-2</sup>	SI <sup>1-2</sup>	I <sup>1-3</sup>
Flawless	Internally Flawless	Very Very Slightly Included	Very Slightly Included	Slightly Included	Included



**ADDITIONAL GRADING INFORMATION**

Polish **EXCELLENT**  
Symmetry **EXCELLENT**  
Fluorescence **NONE**  
Inscription(s) **IGI LG805636426**  
Comments: This Laboratory Grown Diamond was created by Chemical Vapor Deposition (CVD) growth process. Type IIa



June 8, 2026  
IGI Report No. **LG805636426**  
**CUSHION BRILLIANT**  
**3.01 CARATS**  
Carat Weight **VERY LIGHT BROWN**  
Color Grade **VS 2**  
Clarity Grade **68.4%**  
Depth **57%**  
Table **Slightly Thick To Thick (Faceted)**  
Girdle **Long Faceted**  
Culet **EXCELLENT**  
Polish **EXCELLENT**  
Symmetry **EXCELLENT**  
Fluorescence **NONE**  
Inscription(s) **IGI LG805636426**  
Comments: This Laboratory Grown Diamond was created by Chemical Vapor Deposition (CVD) growth process. Type IIa