



ELECTRONIC COPY

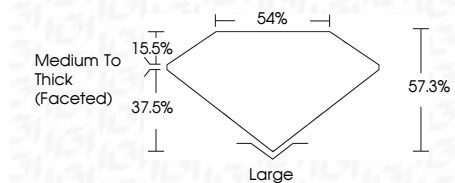
LG805636354
Report verification at igi.org



June 8, 2026
IGI Report Number **LG805636354**
Description **LABORATORY GROWN DIAMOND**
Shape and Cutting Style **PEAR MODIFIED BRILLIANT**
Measurements **10.64 X 6.33 X 3.63 MM**

GRADING RESULTS

Carat Weight **1.59 CARAT**
Color Grade **FANCY VIVID PINK**
Clarity Grade **VS 2**



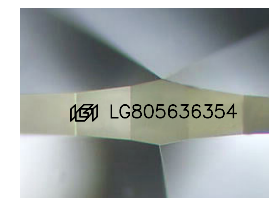
ADDITIONAL GRADING INFORMATION

Polish **EXCELLENT**
Symmetry **EXCELLENT**
Fluorescence **SLIGHT**
Inscription(s) **IGI LG805636354**
Comments: This Laboratory Grown Diamond was created by Chemical Vapor Deposition (CVD) growth process. Indications of post-growth treatment.



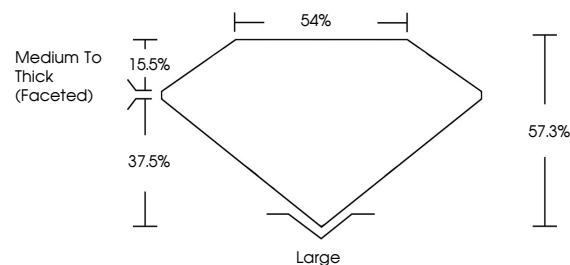
June 8, 2026
IGI Report No LG805636354
PEAR MODIFIED BRILLIANT
10.64 X 6.33 X 3.63 MM
1.59 CARAT
FANCY VIVID PINK
VS 2
57.3%
54%
Medium To Thick (Faceted)
Large
EXCELLENT
EXCELLENT
SLIGHT
IGI LG805636354

Comments: This Laboratory Grown Diamond was created by Chemical Vapor Deposition (CVD) growth process. Indications of post-growth treatment.

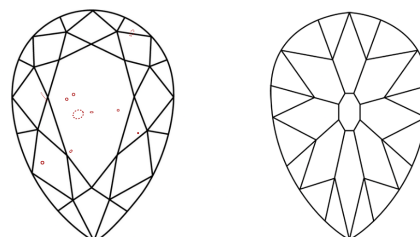


Sample Image Used

PROPORTIONS



CLARITY CHARACTERISTICS



KEY TO SYMBOLS

Red symbols indicate internal characteristics.
Green symbols indicate external characteristics.

COLOR

D E F G H I J Faint Very Light Light

CLARITY

FL	IF	VS ¹⁻²	VS ¹⁻²	SI ¹⁻²	I ¹⁻³
Flawless	Internally Flawless	Very Very Slightly Included	Very Slightly Included	Slightly Included	Included

