



ELECTRONIC COPY

LG805636349
Report verification at igi.org



June 8, 2026
IGI Report Number **LG805636349**
Description **LABORATORY GROWN DIAMOND**
Shape and Cutting Style **TRIANGULAR MODIFIED BRILLIANT**
Measurements **8.35 X 8.58 X 4.07 MM**
GRADING RESULTS
Carat Weight **1.75 CARAT**
Color Grade **FANCY VIVID PINK**
Clarity Grade **VS 1**

LABORATORY GROWN DIAMOND REPORT

June 8, 2026
IGI Report Number **LG805636349**
Description **LABORATORY GROWN DIAMOND**
Shape and Cutting Style **TRIANGULAR MODIFIED BRILLIANT**
Measurements **8.35 X 8.58 X 4.07 MM**

GRADING RESULTS

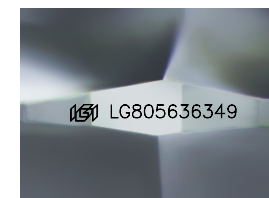
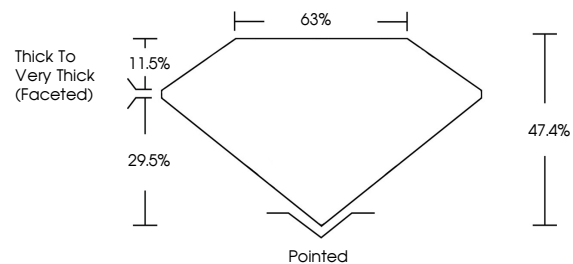
Carat Weight **1.75 CARAT**
Color Grade **FANCY VIVID PINK**
Clarity Grade **VS 1**

ADDITIONAL GRADING INFORMATION

Polish **EXCELLENT**
Symmetry **EXCELLENT**
Fluorescence **SLIGHT**
Inscription(s) **IGI LG805636349**

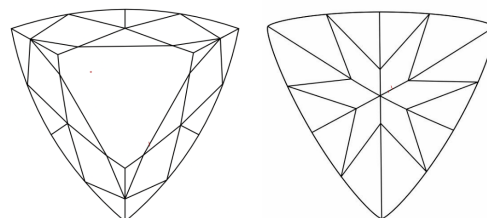
Comments: This Laboratory Grown Diamond was created by Chemical Vapor Deposition (CVD) growth process.
Indications of post-growth treatment.

PROPORTIONS



Sample Image Used

CLARITY CHARACTERISTICS



KEY TO SYMBOLS

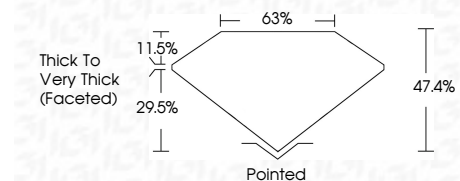
Red symbols indicate internal characteristics.
Green symbols indicate external characteristics.

COLOR

D E F G H I J Faint Very Light Light

CLARITY

FL	IF	VS ¹⁻²	VS ¹⁻²	SI ¹⁻²	I ¹⁻³
Flawless	Internally Flawless	Very Very Slightly Included	Very Slightly Included	Slightly Included	Included



ADDITIONAL GRADING INFORMATION

Polish **EXCELLENT**
Symmetry **EXCELLENT**
Fluorescence **SLIGHT**
Inscription(s) **IGI LG805636349**
Comments: This Laboratory Grown Diamond was created by Chemical Vapor Deposition (CVD) growth process.
Indications of post-growth treatment.



June 8, 2026
IGI Report No. **LG805636349**
TRIANGULAR MODIFIED BRILLIANT
8.35 X 8.58 X 4.07 MM
Carat Weight **1.75 CARAT**
Color Grade **FANCY VIVID PINK**
Clarity Grade **VS 1**
Depth **47.4%**
Table **63%**
Girdle **Thick to Very Thick (Faceted)**
Culet **Pointed**
Polish **EXCELLENT**
Symmetry **EXCELLENT**
Fluorescence **SLIGHT**
Inscription(s) **IGI LG805636349**
Comments: This Laboratory Grown Diamond was created by Chemical Vapor Deposition (CVD) growth process.
Indications of post-growth treatment.