



ELECTRONIC COPY

LG805636345
Report verification at igi.org



June 9, 2026
IGI Report Number **LG805636345**
Description **LABORATORY GROWN DIAMOND**
Shape and Cutting Style **CUSHION BRILLIANT**
Measurements **11.40 X 6.90 X 3.82 MM**
GRADING RESULTS
Carat Weight **2.50 CARATS**
Color Grade **FANCY YELLOW BROWN**
Clarity Grade **VS 2**

June 9, 2026
IGI Report Number **LG805636345**
Description **LABORATORY GROWN DIAMOND**
Shape and Cutting Style **CUSHION BRILLIANT**
Measurements **11.40 X 6.90 X 3.82 MM**

GRADING RESULTS

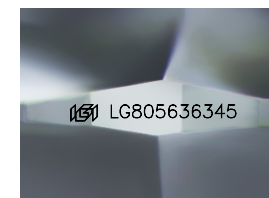
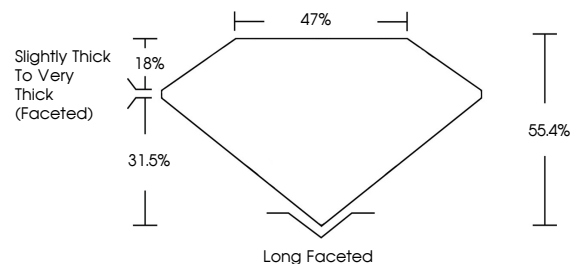
Carat Weight **2.50 CARATS**
Color Grade **FANCY YELLOW BROWN**
Clarity Grade **VS 2**

ADDITIONAL GRADING INFORMATION

Polish **EXCELLENT**
Symmetry **EXCELLENT**
Fluorescence **VERY SLIGHT**
Inscription(s) **IGI LG805636345**

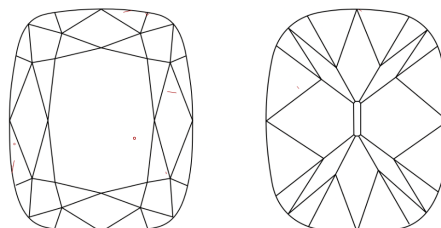
Comments: This Laboratory Grown Diamond was created by Chemical Vapor Deposition (CVD) growth process.
Indications of post-growth treatment.

PROPORTIONS



Sample Image Used

CLARITY CHARACTERISTICS



KEY TO SYMBOLS

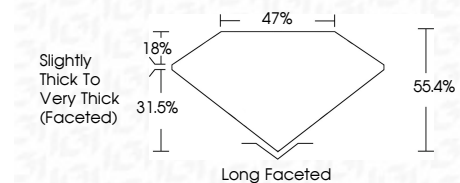
Red symbols indicate internal characteristics.
Green symbols indicate external characteristics.

COLOR

D E F G H I J Faint Very Light Light

CLARITY

FL	IF	VS ¹⁻²	VS ¹⁻²	SI ¹⁻²	I ¹⁻³
Flawless	Internally Flawless	Very Very Slightly Included	Very Slightly Included	Slightly Included	Included



ADDITIONAL GRADING INFORMATION

Polish **EXCELLENT**
Symmetry **EXCELLENT**
Fluorescence **VERY SLIGHT**
Inscription(s) **IGI LG805636345**
Comments: This Laboratory Grown Diamond was created by Chemical Vapor Deposition (CVD) growth process.
Indications of post-growth treatment.



IGI



June 9, 2026
IGI Report No. **LG805636345**
CUSHION BRILLIANT
11.40 X 6.90 X 3.82 MM
2.50 CARATS
FANCY YELLOW BROWN
VS 2
55.4%
47%
Slightly Thick To Very Thick (Faceted)
Long Faceted
EXCELLENT
EXCELLENT
VERY SLIGHT
IGI LG805636345
Comments: This Laboratory Grown Diamond was created by Chemical Vapor Deposition (CVD) growth process.
Indications of post-growth treatment.