



ELECTRONIC COPY

LG805635495 Report verification at igi.org



June 9, 2026 IGI Report Number LG805635495 Description LABORATORY GROWN DIAMOND Shape and Cutting Style SQUARE CUSHION MODIFIED BRILLIANT Measurements 6.11 X 6.06 X 3.85 MM GRADING RESULTS Carat Weight 1.06 CARAT Color Grade D Clarity Grade VVS 2

LABORATORY GROWN DIAMOND REPORT

June 9, 2026 IGI Report Number LG805635495 Description LABORATORY GROWN DIAMOND Shape and Cutting Style SQUARE CUSHION MODIFIED BRILLIANT Measurements 6.11 X 6.06 X 3.85 MM

GRADING RESULTS

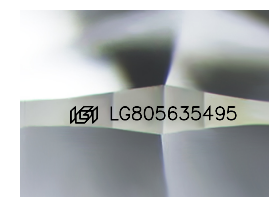
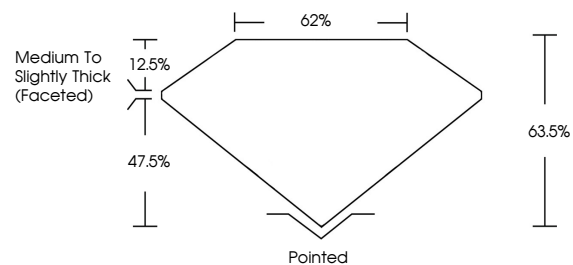
Carat Weight 1.06 CARAT Color Grade D Clarity Grade VVS 2

ADDITIONAL GRADING INFORMATION

Polish EXCELLENT Symmetry EXCELLENT Fluorescence NONE Inscription(s) IGI LG805635495

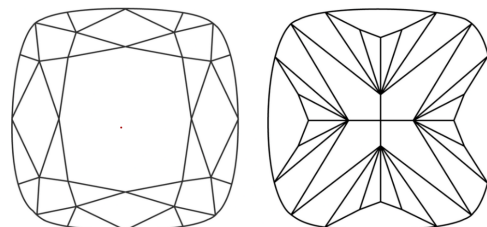
Comments: This Laboratory Grown Diamond was created by Chemical Vapor Deposition (CVD) growth process. Type IIa

PROPORTIONS



Sample Image Used

CLARITY CHARACTERISTICS



KEY TO SYMBOLS

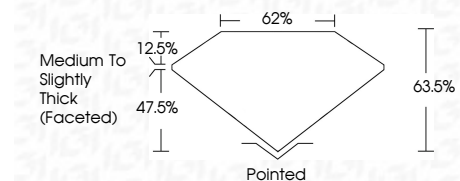
Red symbols indicate internal characteristics. Green symbols indicate external characteristics.

COLOR

D E F G H I J Faint Very Light Light

CLARITY

FL IF VVS 1-2 VS 1-2 SI 1-2 I 1-3 Flawless Internally Flawless Very Very Slightly Included Very Slightly Included Slightly Included Included



ADDITIONAL GRADING INFORMATION

Polish EXCELLENT Symmetry EXCELLENT Fluorescence NONE Inscription(s) IGI LG805635495 Comments: This Laboratory Grown Diamond was created by Chemical Vapor Deposition (CVD) growth process. Type IIa



June 9, 2026 IGI Report No. LG805635495 SQUARE CUSHION MODIFIED BRILLIANT 6.11 X 6.06 X 3.85 MM 1.06 CARAT D VVS 2 63.5% 62% Medium to Slightly Thick (Faceted) Pointed EXCELLENT EXCELLENT NONE NONE IGI LG805635495 Comments: This Laboratory Grown Diamond was created by Chemical Vapor Deposition (CVD) growth process. Type IIa