



ELECTRONIC COPY

LG805635086
Report verification at igi.org



June 5, 2026
IGI Report Number **LG805635086**
Description **LABORATORY GROWN DIAMOND**
Shape and Cutting Style **ROUND BRILLIANT**
Measurements **6.50 - 6.56 X 3.97 MM**
GRADING RESULTS
Carat Weight **1.03 CARAT**
Color Grade **FANCY INTENSE PINK**
Clarity Grade **VVS 2**
Cut Grade **IDEAL**

June 5, 2026
IGI Report Number **LG805635086**
Description **LABORATORY GROWN DIAMOND**
Shape and Cutting Style **ROUND BRILLIANT**
Measurements **6.50 - 6.56 X 3.97 MM**

GRADING RESULTS

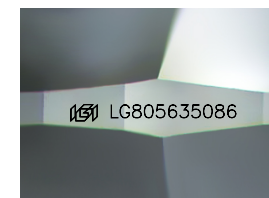
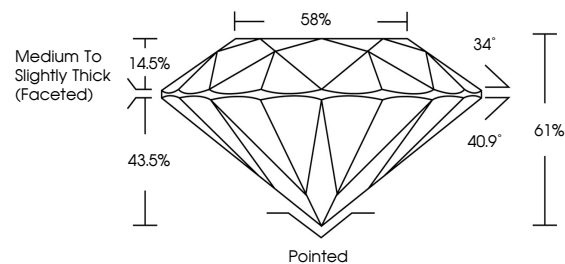
Carat Weight **1.03 CARAT**
Color Grade **FANCY INTENSE PINK**
Clarity Grade **VVS 2**
Cut Grade **IDEAL**

ADDITIONAL GRADING INFORMATION

Polish **EXCELLENT**
Symmetry **EXCELLENT**
Fluorescence **SLIGHT**
Inscription(s) **LG805635086**

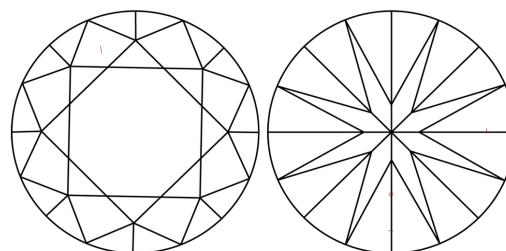
Comments: This Laboratory Grown Diamond was created by High Pressure High Temperature (HPHT) growth process.
Indications of post-growth treatment.

PROPORTIONS



Sample Image Used

CLARITY CHARACTERISTICS



KEY TO SYMBOLS

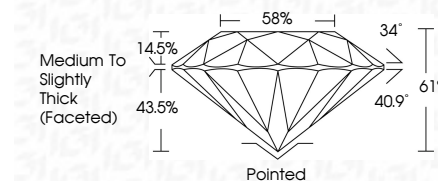
Red symbols indicate internal characteristics.
Green symbols indicate external characteristics.

COLOR

D E F G H I J Faint Very Light Light

CLARITY

FL	IF	VVS ¹⁻²	VS ¹⁻²	SI ¹⁻²	I ¹⁻³
Flawless	Internally Flawless	Very Very Slightly Included	Very Slightly Included	Slightly Included	Included



ADDITIONAL GRADING INFORMATION

Polish **EXCELLENT**
Symmetry **EXCELLENT**
Fluorescence **SLIGHT**
Inscription(s) **LG805635086**
Comments: This Laboratory Grown Diamond was created by High Pressure High Temperature (HPHT) growth process.
Indications of post-growth treatment.



June 5, 2026
IGI Report No. **LG805635086**
ROUND BRILLIANT
6.50 - 6.56 X 3.97 MM
Carat Weight **1.03 CARAT**
Color Grade **FANCY INTENSE PINK**
Clarity Grade **VVS 2**
Cut Grade **IDEAL**
Depth **61%**
Table **14.5%**
Girdle **Medium To Slightly Thick (Faceted)**
Culet **Pointed**
Polish **EXCELLENT**
Symmetry **EXCELLENT**
Fluorescence **SLIGHT**
Inscriptions(s) **LG805635086**
Comments: This Laboratory Grown Diamond was created by High Pressure High Temperature (HPHT) growth process.
Indications of post-growth treatment.