



ELECTRONIC COPY

LG805634623
Report verification at igi.org



June 9, 2026
IGI Report Number **LG805634623**
Description **LABORATORY GROWN DIAMOND**
Shape and Cutting Style **EMERALD CUT**
Measurements **8.08 X 5.69 X 3.55 MM**
GRADING RESULTS
Carat Weight **1.58 CARAT**
Color Grade **FANCY VIVID BROWNISH ORANGE**
Clarity Grade **VS 1**

June 9, 2026
IGI Report Number **LG805634623**
Description **LABORATORY GROWN DIAMOND**
Shape and Cutting Style **EMERALD CUT**
Measurements **8.08 X 5.69 X 3.55 MM**

GRADING RESULTS

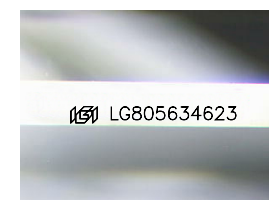
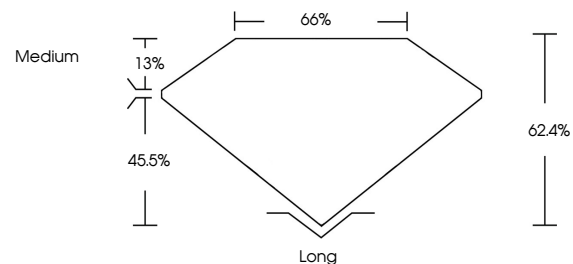
Carat Weight **1.58 CARAT**
Color Grade **FANCY VIVID BROWNISH ORANGE**
Clarity Grade **VS 1**

ADDITIONAL GRADING INFORMATION

Polish **EXCELLENT**
Symmetry **EXCELLENT**
Fluorescence **NONE**
Inscription(s) **IGI LG805634623**

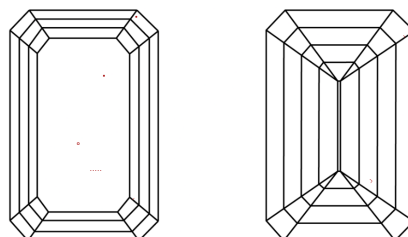
Comments: This Laboratory Grown Diamond was created by Chemical Vapor Deposition (CVD) growth process.
Indications of post-growth treatment.

PROPORTIONS



Sample Image Used

CLARITY CHARACTERISTICS



KEY TO SYMBOLS

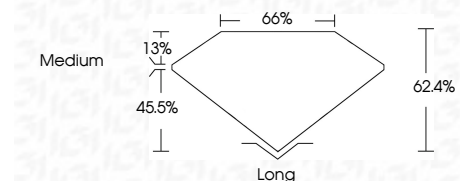
Red symbols indicate internal characteristics.
Green symbols indicate external characteristics.

COLOR

D E F G H I J Faint Very Light Light

CLARITY

FL	IF	VS ¹⁻²	VS ¹⁻²	SI ¹⁻²	I ¹⁻³
Flawless	Internally Flawless	Very Very Slightly Included	Very Slightly Included	Slightly Included	Included



ADDITIONAL GRADING INFORMATION

Polish **EXCELLENT**
Symmetry **EXCELLENT**
Fluorescence **NONE**
Inscription(s) **IGI LG805634623**
Comments: This Laboratory Grown Diamond was created by Chemical Vapor Deposition (CVD) growth process.
Indications of post-growth treatment.



June 9, 2026
IGI Report No. **LG805634623**
EMERALD CUT
1.58 CARAT
8.08 X 5.69 X 3.55 MM
Carat Weight
Color Grade **FANCY VIVID BROWNISH ORANGE**
Clarity Grade **VS 1**
Depth **62.4%**
Table **66%**
Girdle **Medium**
Culet **Long**
Polish **EXCELLENT**
Symmetry **EXCELLENT**
Fluorescence **NONE**
Inscription(s) **IGI LG805634623**
Comments: This Laboratory Grown Diamond was created by Chemical Vapor Deposition (CVD) growth process.
Indications of post-growth treatment.