



ELECTRONIC COPY

LG805631102
Report verification at igi.org



June 2, 2026
IGI Report Number **LG805631102**
Description **LABORATORY GROWN DIAMOND**
Shape and Cutting Style **SQUARE CUSHION MODIFIED BRILLIANT**
Measurements **6.54 X 6.35 X 4.13 MM**
GRADING RESULTS
Carat Weight **1.53 CARAT**
Color Grade **FANCY YELLOW**
Clarity Grade **VS 1**

LABORATORY GROWN DIAMOND REPORT

June 2, 2026
IGI Report Number **LG805631102**
Description **LABORATORY GROWN DIAMOND**
Shape and Cutting Style **SQUARE CUSHION MODIFIED BRILLIANT**
Measurements **6.54 X 6.35 X 4.13 MM**

GRADING RESULTS

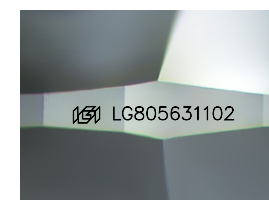
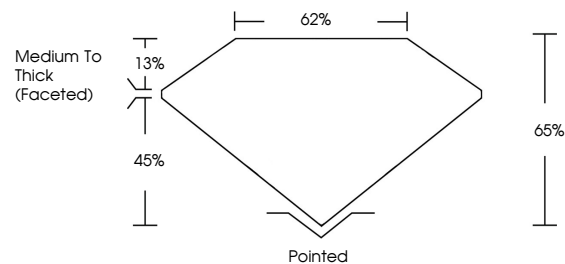
Carat Weight **1.53 CARAT**
Color Grade **FANCY YELLOW**
Clarity Grade **VS 1**

ADDITIONAL GRADING INFORMATION

Polish **EXCELLENT**
Symmetry **EXCELLENT**
Fluorescence **NONE**
Inscription(s) **IGI LG805631102**

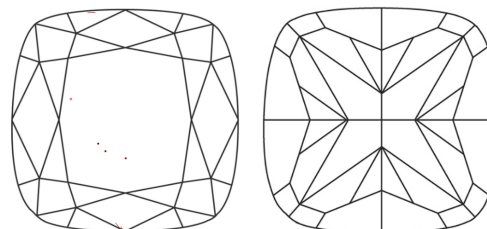
Comments: This Laboratory Grown Diamond was created by Chemical Vapor Deposition (CVD) growth process.

PROPORTIONS



Sample Image Used

CLARITY CHARACTERISTICS



KEY TO SYMBOLS

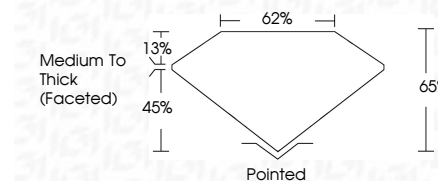
Red symbols indicate internal characteristics.
Green symbols indicate external characteristics.

COLOR

D E F G H I J Faint Very Light Light

CLARITY

| FL | IF | VS ¹⁻² | VS ¹⁻² | SI ¹⁻² | I ¹⁻³ |
|----------|---------------------|-----------------------------|------------------------|-------------------|------------------|
| Flawless | Internally Flawless | Very Very Slightly Included | Very Slightly Included | Slightly Included | Included |



ADDITIONAL GRADING INFORMATION

Polish **EXCELLENT**
Symmetry **EXCELLENT**
Fluorescence **NONE**
Inscription(s) **IGI LG805631102**
Comments: This Laboratory Grown Diamond was created by Chemical Vapor Deposition (CVD) growth process.



June 2, 2026
IGI Report No. **LG805631102**
SQUARE CUSHION MODIFIED BRILLIANT
6.54 X 6.35 X 4.13 MM
Carat Weight **1.53 CARAT**
Color Grade **FANCY YELLOW**
Clarity Grade **VS 1**
Depth **65%**
Table **62%**
Girdle **Medium To Thick (Faceted)**
Culet **Pointed**
Polish **EXCELLENT**
Symmetry **EXCELLENT**
Fluorescence **NONE**
Inscription(s) **IGI LG805631102**
Comments: This Laboratory Grown Diamond was created by Chemical Vapor Deposition (CVD) growth process.