



**ELECTRONIC COPY**

LG805630151  
Report verification at igi.org



May 27, 2026

IGI Report Number **LG805630151**

Description **LABORATORY GROWN DIAMOND**

Shape and Cutting Style **HEXAGONAL STEP CUT**

Measurements **9.60 X 5.33 X 3.22 MM**

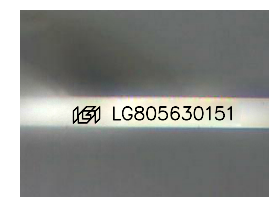
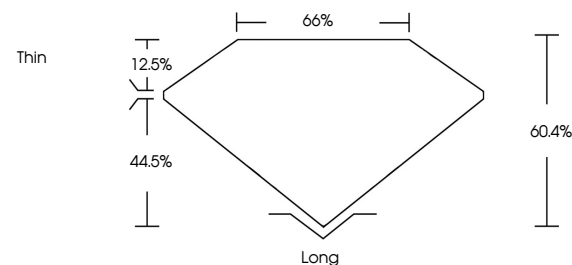
**GRADING RESULTS**

Carat Weight **1.25 CARAT**

Color Grade **D**

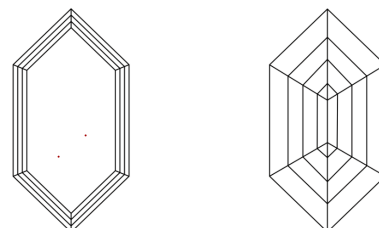
Clarity Grade **VVS 2**

**PROPORTIONS**



Sample Image Used

**CLARITY CHARACTERISTICS**



**KEY TO SYMBOLS**

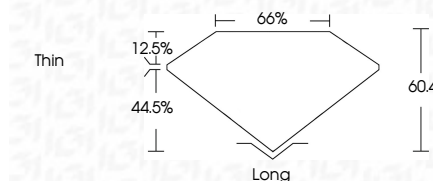
Red symbols indicate internal characteristics.  
Green symbols indicate external characteristics.

**COLOR**

D E F G H I J Faint Very Light Light

**CLARITY**

FL	IF	VVS <sup>1-2</sup>	VS <sup>1-2</sup>	SI <sup>1-2</sup>	I <sup>1-3</sup>
Flawless	Internally Flawless	Very Very Slightly Included	Very Slightly Included	Slightly Included	Included



**ADDITIONAL GRADING INFORMATION**

Polish **EXCELLENT**

Symmetry **EXCELLENT**

Fluorescence **NONE**

Inscription(s) **IGI LG805630151**

Comments: This Laboratory Grown Diamond was created by Chemical Vapor Deposition (CVD) growth process. Type IIa



**IGI**



May 27, 2026	1.25 CARAT	D	VVS 2	60.4%	65%	Thin	Long
IGI Report No LG805630151	HEXAGONAL STEP CUT						EXCELLENT
9.60 X 5.33 X 3.22 MM	Color Grade						EXCELLENT
	Clarity Grade						NONE
	Depth						IGI LG805630151
	Table						
	Girdle						
	Culet						
	Polish						
	Symmetry						
	Fluorescence						
	Inscription(s)						

Comments: This Laboratory Grown Diamond was created by Chemical Vapor Deposition (CVD) growth process. Type IIa