



ELECTRONIC COPY

LG805626030
Report verification at igi.org



May 29, 2026
IGI Report Number **LG805626030**
Description **LABORATORY GROWN DIAMOND**
Shape and Cutting Style **ROUND BRILLIANT**
Measurements **6.52 - 6.56 X 4.00 MM**
GRADING RESULTS
Carat Weight **1.05 CARAT**
Color Grade **FANCY INTENSE PINK**
Clarity Grade **VS 2**
Cut Grade **IDEAL**

May 29, 2026
IGI Report Number **LG805626030**
Description **LABORATORY GROWN DIAMOND**
Shape and Cutting Style **ROUND BRILLIANT**
Measurements **6.52 - 6.56 X 4.00 MM**

GRADING RESULTS

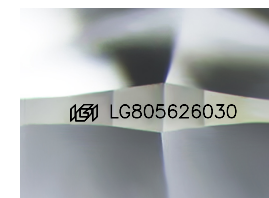
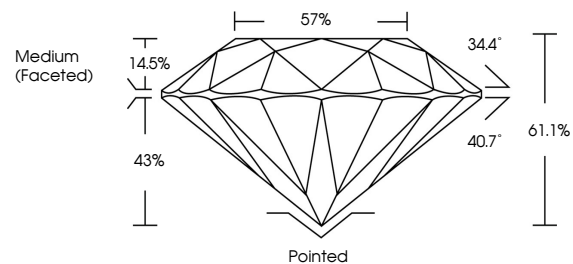
Carat Weight **1.05 CARAT**
Color Grade **FANCY INTENSE PINK**
Clarity Grade **VS 2**
Cut Grade **IDEAL**

ADDITIONAL GRADING INFORMATION

Polish **EXCELLENT**
Symmetry **EXCELLENT**
Fluorescence **SLIGHT**
Inscription(s) **LG805626030**

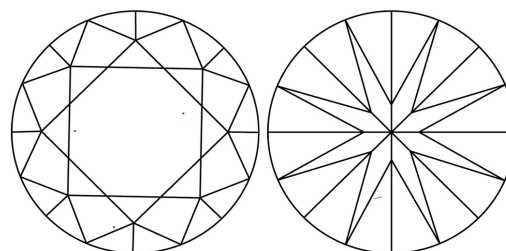
Comments: This Laboratory Grown Diamond was created by Chemical Vapor Deposition (CVD) growth process.
Indications of post-growth treatment.

PROPORTIONS



Sample Image Used

CLARITY CHARACTERISTICS



KEY TO SYMBOLS

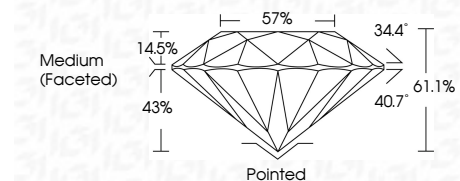
Red symbols indicate internal characteristics.
Green symbols indicate external characteristics.

COLOR

D E F G H I J Faint Very Light Light

CLARITY

FL	IF	VS ¹⁻²	VS ¹⁻²	SI ¹⁻²	I ¹⁻³
Flawless	Internally Flawless	Very Very Slightly Included	Very Slightly Included	Slightly Included	Included



ADDITIONAL GRADING INFORMATION

Polish **EXCELLENT**
Symmetry **EXCELLENT**
Fluorescence **SLIGHT**
Inscription(s) **LG805626030**
Comments: This Laboratory Grown Diamond was created by Chemical Vapor Deposition (CVD) growth process.
Indications of post-growth treatment.



May 29, 2026
IGI Report No. LG805626030
ROUND BRILLIANT
6.52 - 6.56 X 4.00 MM
1.05 CARAT
FANCY INTENSE PINK
VS 2
IDEAL
61.1%
57%
Medium (Faceted)
Pointed
EXCELLENT
EXCELLENT
SLIGHT
IGI LG805626030
Comments: This Laboratory Grown Diamond was created by Chemical Vapor Deposition (CVD) growth process.
Indications of post-growth treatment.