



ELECTRONIC COPY

LG805625782 Report verification at igi.org



May 28, 2026 IGI Report Number LG805625782 Description LABORATORY GROWN DIAMOND Shape and Cutting Style HEXAGONAL MODIFIED BRILLIANT Measurements 15.84 X 7.69 X 5.24 MM GRADING RESULTS Carat Weight 4.02 CARATS Color Grade F Clarity Grade VS 1

LABORATORY GROWN DIAMOND REPORT

May 28, 2026 IGI Report Number LG805625782 Description LABORATORY GROWN DIAMOND Shape and Cutting Style HEXAGONAL MODIFIED BRILLIANT Measurements 15.84 X 7.69 X 5.24 MM

GRADING RESULTS

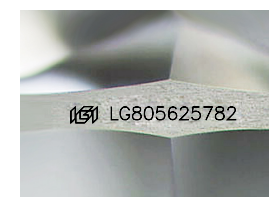
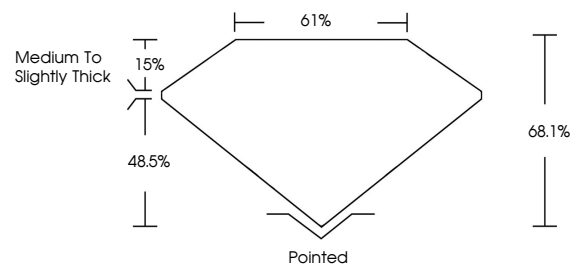
Carat Weight 4.02 CARATS Color Grade F Clarity Grade VS 1

ADDITIONAL GRADING INFORMATION

Polish EXCELLENT Symmetry EXCELLENT Fluorescence NONE Inscription(s) LG805625782

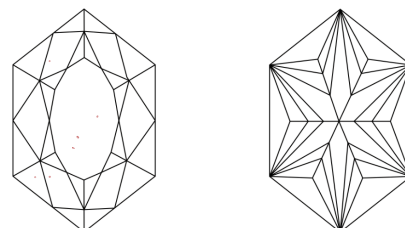
Comments: This Laboratory Grown Diamond was created by Chemical Vapor Deposition (CVD) growth process. Type IIa

PROPORTIONS



Sample Image Used

CLARITY CHARACTERISTICS



KEY TO SYMBOLS

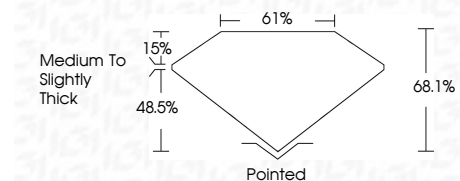
Red symbols indicate internal characteristics. Green symbols indicate external characteristics.

COLOR

D E F G H I J Faint Very Light Light

CLARITY

FL IF VS 1-2 VS 1-2 SI 1-2 I 1-3 Flawless Internally Flawless Very Very Slightly Included Very Slightly Included Slightly Included Included



ADDITIONAL GRADING INFORMATION

Polish EXCELLENT Symmetry EXCELLENT Fluorescence NONE Inscription(s) LG805625782 Comments: This Laboratory Grown Diamond was created by Chemical Vapor Deposition (CVD) growth process. Type IIa



May 28, 2026 IGI Report No. LG805625782 HEXAGONAL MODIFIED BRILLIANT 4.02 CARATS F VS 1 68.1% 61% Medium to Slightly Thick Pointed EXCELLENT EXCELLENT NONE NONE LG805625782 Comments: This Laboratory Grown Diamond was created by Chemical Vapor Deposition (CVD) growth process. Type IIa