



ELECTRONIC COPY

LG805620394
Report verification at igi.org



May 27, 2026

IGI Report Number **LG805620394**

Description **LABORATORY GROWN DIAMOND**

Shape and Cutting Style **ROUND BRILLIANT**

Measurements **6.46 - 6.49 X 3.93 MM**

GRADING RESULTS

Carat Weight **1.02 CARAT**

Color Grade **D**

Clarity Grade **VVS 1**

Cut Grade **EXCELLENT**

May 27, 2026

IGI Report Number **LG805620394**

Description **LABORATORY GROWN DIAMOND**

Shape and Cutting Style **ROUND BRILLIANT**

Measurements **6.46 - 6.49 X 3.93 MM**

GRADING RESULTS

Carat Weight **1.02 CARAT**

Color Grade **D**

Clarity Grade **VVS 1**

Cut Grade **EXCELLENT**

ADDITIONAL GRADING INFORMATION

Polish **EXCELLENT**

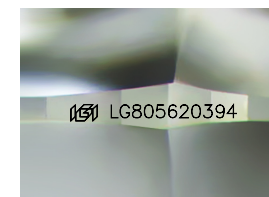
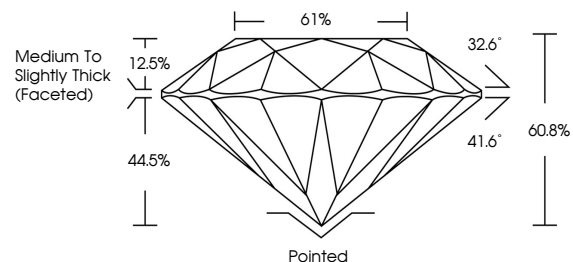
Symmetry **EXCELLENT**

Fluorescence **NONE**

Inscription(s) **LG805620394**

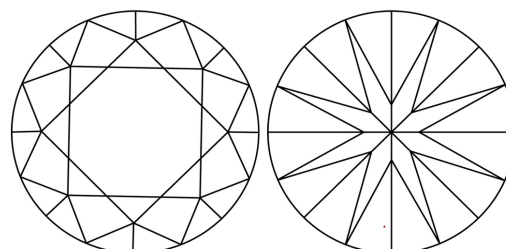
Comments: This Laboratory Grown Diamond was created by Chemical Vapor Deposition (CVD) growth process.
Type IIa

PROPORTIONS



Sample Image Used

CLARITY CHARACTERISTICS



KEY TO SYMBOLS

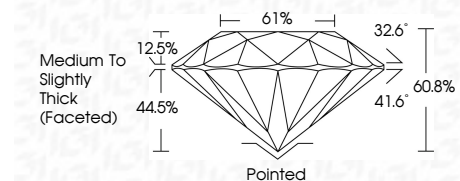
Red symbols indicate internal characteristics.
Green symbols indicate external characteristics.

COLOR

D E F G H I J Faint Very Light Light

CLARITY

FL	IF	VVS ¹⁻²	VS ¹⁻²	SI ¹⁻²	I ¹⁻³
Flawless	Internally Flawless	Very Very Slightly Included	Very Slightly Included	Slightly Included	Included



ADDITIONAL GRADING INFORMATION

Polish **EXCELLENT**

Symmetry **EXCELLENT**

Fluorescence **NONE**

Inscription(s) **LG805620394**

Comments: This Laboratory Grown Diamond was created by Chemical Vapor Deposition (CVD) growth process.
Type IIa



IGI



May 27, 2026	1.02 CARAT	D	VVS 1	EXCELLENT	61%	32.6°	41.6°	44.5%	12.5%	Pointed	EXCELLENT	EXCELLENT	NONE	LG805620394					
IGI Report No LG805620394	6.46 - 6.49 X 3.93 MM	LABORATORY GROWN DIAMOND	EXCELLENT	EXCELLENT	61%	32.6°	41.6°	44.5%	12.5%	Pointed	EXCELLENT	EXCELLENT	NONE	LG805620394					
ROUND BRILLIANT	1.02 CARAT	D	VVS 1	EXCELLENT	61%	32.6°	41.6°	44.5%	12.5%	Pointed	EXCELLENT	EXCELLENT	NONE	LG805620394					
Carat Weight	1.02 CARAT	Color Grade	D	Clarity Grade	VVS 1	Depth	61%	Table	12.5%	Crown Thickness (Faceted)	Pointed	Polish	EXCELLENT	Symmetry	EXCELLENT	Fluorescence	NONE	Inscription(s)	LG805620394

Comments: This Laboratory Grown Diamond was created by Chemical Vapor Deposition (CVD) growth process.
Type IIa