



**ELECTRONIC COPY**

LG805619375  
Report verification at igi.org



June 10, 2026

IGI Report Number **LG805619375**

Description **LABORATORY GROWN DIAMOND**

Shape and Cutting Style **EMERALD CUT**

Measurements **11.70 X 7.61 X 4.89 MM**

**GRADING RESULTS**

Carat Weight **4.55 CARATS**

Color Grade **E**

Clarity Grade **VVS 2**

June 10, 2026  
IGI Report Number **LG805619375**  
Description **LABORATORY GROWN DIAMOND**  
Shape and Cutting Style **EMERALD CUT**  
Measurements **11.70 X 7.61 X 4.89 MM**

**GRADING RESULTS**

Carat Weight **4.55 CARATS**

Color Grade **E**

Clarity Grade **VVS 2**

**ADDITIONAL GRADING INFORMATION**

Polish **EXCELLENT**

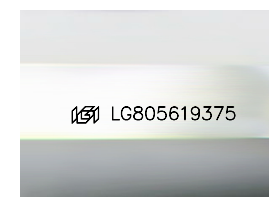
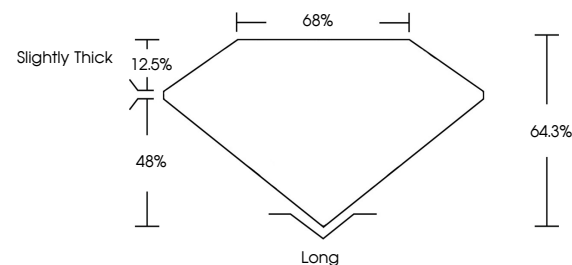
Symmetry **EXCELLENT**

Fluorescence **NONE**

Inscription(s) **IGI LG805619375**

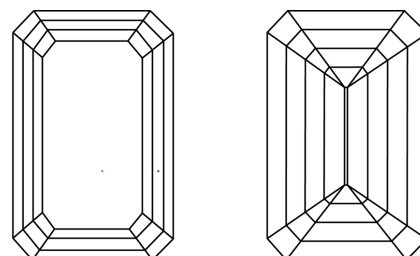
Comments: This Laboratory Grown Diamond was created by Chemical Vapor Deposition (CVD) growth process.  
Type IIa

**PROPORTIONS**



Sample Image Used

**CLARITY CHARACTERISTICS**



**KEY TO SYMBOLS**

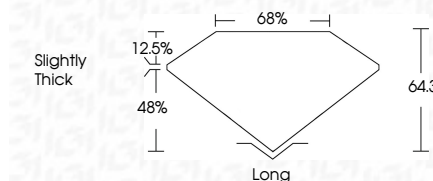
Red symbols indicate internal characteristics.  
Green symbols indicate external characteristics.

**COLOR**

D E F G H I J Faint Very Light Light

**CLARITY**

FL	IF	VVS <sup>1-2</sup>	VS <sup>1-2</sup>	SI <sup>1-2</sup>	I <sup>1-3</sup>
Flawless	Internally Flawless	Very Very Slightly Included	Very Slightly Included	Slightly Included	Included



**ADDITIONAL GRADING INFORMATION**

Polish **EXCELLENT**

Symmetry **EXCELLENT**

Fluorescence **NONE**

Inscription(s) **IGI LG805619375**

Comments: This Laboratory Grown Diamond was created by Chemical Vapor Deposition (CVD) growth process.  
Type IIa



**IGI**



June 10, 2026  
IGI Report No. LG805619375  
EMERALD CUT  
11.70 X 7.61 X 4.89 MM  
4.55 CARATS  
E  
VVS 2  
64.3%  
48%  
Slightly Thick  
Long  
EXCELLENT  
EXCELLENT  
NONE  
IGI LG805619375  
Comments: This Laboratory Grown Diamond was created by Chemical Vapor Deposition (CVD) growth process.  
Type IIa