



**ELECTRONIC COPY**

LG805612325  
Report verification at igi.org



May 29, 2026

IGI Report Number **LG805612325**

Description **LABORATORY GROWN DIAMOND**

Shape and Cutting Style **BAGUETTE**

Measurements **10.56 X 5.23 X 3.61 MM**

**GRADING RESULTS**

Carat Weight **2.10 CARATS**

Color Grade **FANCY VIVID GREEN**

Clarity Grade **VS 1**

May 29, 2026  
IGI Report Number **LG805612325**  
Description **LABORATORY GROWN DIAMOND**  
Shape and Cutting Style **BAGUETTE**  
Measurements **10.56 X 5.23 X 3.61 MM**

**GRADING RESULTS**

Carat Weight **2.10 CARATS**

Color Grade **FANCY VIVID GREEN**

Clarity Grade **VS 1**

**ADDITIONAL GRADING INFORMATION**

Polish **EXCELLENT**

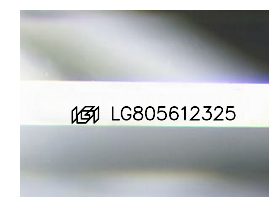
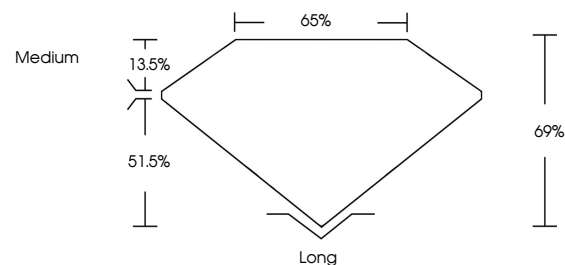
Symmetry **EXCELLENT**

Fluorescence **NONE**

Inscription(s) **IGI LG805612325**

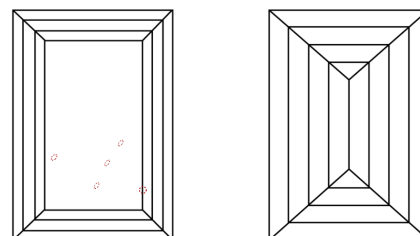
Comments: This Laboratory Grown Diamond was created by Chemical Vapor Deposition (CVD) growth process.  
Indications of post-growth treatment.

**PROPORTIONS**



Sample Image Used

**CLARITY CHARACTERISTICS**



**KEY TO SYMBOLS**

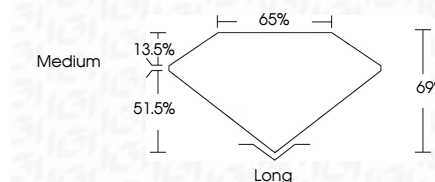
Red symbols indicate internal characteristics.  
Green symbols indicate external characteristics.

**COLOR**

D E F G H I J Faint Very Light Light

**CLARITY**

FL	IF	VS <sup>1-2</sup>	VS <sup>1-2</sup>	SI <sup>1-2</sup>	I <sup>1-3</sup>
Flawless	Internally Flawless	Very Very Slightly Included	Very Slightly Included	Slightly Included	Included



**ADDITIONAL GRADING INFORMATION**

Polish **EXCELLENT**

Symmetry **EXCELLENT**

Fluorescence **NONE**

Inscription(s) **IGI LG805612325**

Comments: This Laboratory Grown Diamond was created by Chemical Vapor Deposition (CVD) growth process.  
Indications of post-growth treatment.



**IGI**



May 29, 2026  
IGI Report No. LG805612325  
**BAGUETTE**  
2.10 CARATS  
FANCY VIVID GREEN  
VS 1  
69%  
65%  
Medium  
Long  
EXCELLENT  
EXCELLENT  
NONE  
IGI LG805612325  
Comments: This Laboratory Grown Diamond was created by Chemical Vapor Deposition (CVD) growth process.  
Indications of post-growth treatment.