



**ELECTRONIC COPY**

LG805611390  
Report verification at igi.org



May 28, 2026

IGI Report Number **LG805611390**

Description **LABORATORY GROWN DIAMOND**

Shape and Cutting Style **PRINCESS CUT**

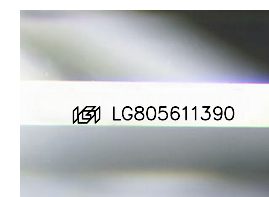
Measurements **7.68 X 7.56 X 5.41 MM**

**GRADING RESULTS**

Carat Weight **2.71 CARATS**

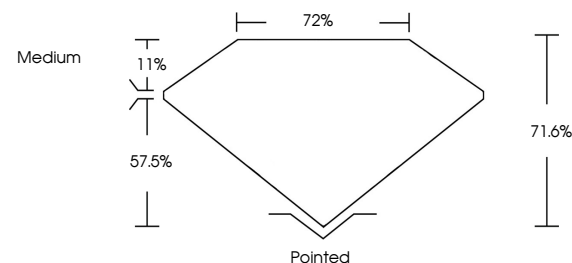
Color Grade **E**

Clarity Grade **VVS 2**

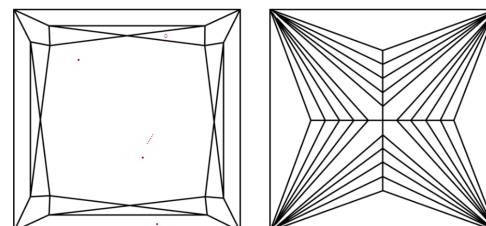


Sample Image Used

**PROPORTIONS**



**CLARITY CHARACTERISTICS**



**KEY TO SYMBOLS**

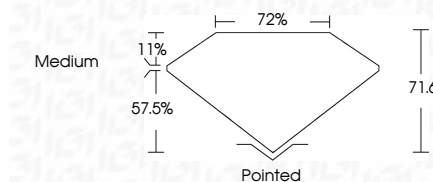
Red symbols indicate internal characteristics.  
Green symbols indicate external characteristics.

**COLOR**

D E F G H I J Faint Very Light Light

**CLARITY**

FL	IF	VVS <sup>1-2</sup>	VS <sup>1-2</sup>	SI <sup>1-2</sup>	I <sup>1-3</sup>
Flawless	Internally Flawless	Very Very Slightly Included	Very Slightly Included	Slightly Included	Included



**ADDITIONAL GRADING INFORMATION**

Polish **EXCELLENT**

Symmetry **EXCELLENT**

Fluorescence **NONE**

Inscription(s) **IGI LG805611390**

Comments: This Laboratory Grown Diamond was created by Chemical Vapor Deposition (CVD) growth process. Type IIa



**IGI**



May 28, 2026  
IGI Report No. LG805611390  
**PRINCESS CUT**  
7.68 X 7.56 X 5.41 MM  
2.71 CARATS  
E  
VVS 2  
71.6%  
72%  
Medium  
Pointed  
EXCELLENT  
EXCELLENT  
NONE  
IGI LG805611390  
Comments: This Laboratory Grown Diamond was created by Chemical Vapor Deposition (CVD) growth process. Type IIa