



May 27, 2026

IGI Report Number **LG805607832**

**ROUND BRILLIANT  
LABORATORY GROWN DIAMOND  
6.03 - 6.08 X 3.76 MM**

Carat Weight	<b>0.84 CARAT</b>
Color Grade	<b>F</b>
Clarity Grade	<b>VVS 2</b>
Cut Grade	<b>IDEAL</b>
Polish	<b>EXCELLENT</b>
Symmetry	<b>EXCELLENT</b>
Fluorescence	<b>NONE</b>
Inscription(s)	<b>IGI LG805607832</b>

Comments: As Grown - No indication of post-growth treatment. This Laboratory Grown Diamond was created by High Pressure High Temperature (HPHT) growth process. Type II

**LABORATORY GROWN DIAMOND REPORT**

May 27, 2026	
IGI Report Number	<b>LG805607832</b>
Description	<b>LABORATORY GROWN DIAMOND</b>
Shape and Cutting Style	<b>ROUND BRILLIANT</b>
Measurements	<b>6.03 - 6.08 X 3.76 MM</b>

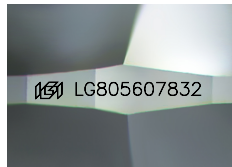
**GRADING RESULTS**

Carat Weight	<b>0.84 CARAT</b>
Color Grade	<b>F</b>
Clarity Grade	<b>VVS 2</b>
Cut Grade	<b>IDEAL</b>

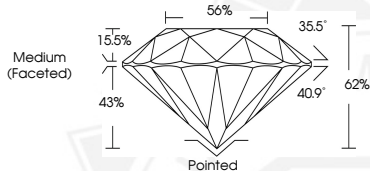
**ADDITIONAL GRADING INFORMATION**

Polish	<b>EXCELLENT</b>
Symmetry	<b>EXCELLENT</b>
Fluorescence	<b>NONE</b>
Inscription(s)	<b>IGI LG805607832</b>

Comments: As Grown - No indication of post-growth treatment. This Laboratory Grown Diamond was created by High Pressure High Temperature (HPHT) growth process. Type II



Sample Image Used



May 27, 2026

IGI Report Number **LG805607832**

**ROUND BRILLIANT  
LABORATORY GROWN DIAMOND  
6.03 - 6.08 X 3.76 MM**

Carat Weight	<b>0.84 CARAT</b>
Color Grade	<b>F</b>
Clarity Grade	<b>VVS 2</b>
Cut Grade	<b>IDEAL</b>
Polish	<b>EXCELLENT</b>
Symmetry	<b>EXCELLENT</b>
Fluorescence	<b>NONE</b>
Inscription(s)	<b>IGI LG805607832</b>

Comments: As Grown - No indication of post-growth treatment. This Laboratory Grown Diamond was created by High Pressure High Temperature (HPHT) growth process. Type II

THIS DOCUMENT WAS PRODUCED WITH THE FOLLOWING SECURITY MEASURES: SPECIAL DOCUMENT PAPER, INK SCREENS, WATERMARK, BACKGROUND DESIGNS, HOLOGRAM AND OTHER SECURITY FEATURES NOT LISTED AND DO EXCEED DOCUMENT SECURITY INDUSTRY GUIDELINES.

For terms & conditions and to verify this report, please visit [www.igi.org](http://www.igi.org)