



**ELECTRONIC COPY**

LG804674719  
Report verification at igi.org



June 3, 2026

IGI Report Number **LG804674719**

Description **LABORATORY GROWN DIAMOND**

Shape and Cutting Style **EMERALD CUT**

Measurements **10.07 X 6.85 X 4.23 MM**

**GRADING RESULTS**

Carat Weight **3.00 CARATS**

Color Grade **FANCY INTENSE PINK**

Clarity Grade **VS 1**

June 3, 2026

IGI Report Number **LG804674719**

Description **LABORATORY GROWN DIAMOND**

Shape and Cutting Style **EMERALD CUT**

Measurements **10.07 X 6.85 X 4.23 MM**

**GRADING RESULTS**

Carat Weight **3.00 CARATS**

Color Grade **FANCY INTENSE PINK**

Clarity Grade **VS 1**

**ADDITIONAL GRADING INFORMATION**

Polish **EXCELLENT**

Symmetry **EXCELLENT**

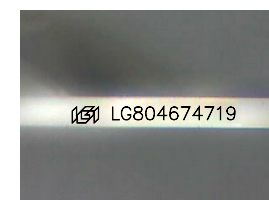
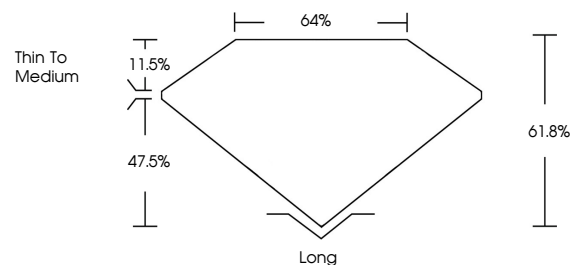
Fluorescence **SLIGHT**

Inscription(s) **IGI LG804674719**

Comments: This Laboratory Grown Diamond was created by Chemical Vapor Deposition (CVD) growth process.

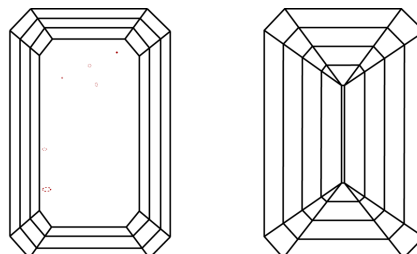
Indications of post-growth treatment.

**PROPORTIONS**



Sample Image Used

**CLARITY CHARACTERISTICS**



**KEY TO SYMBOLS**

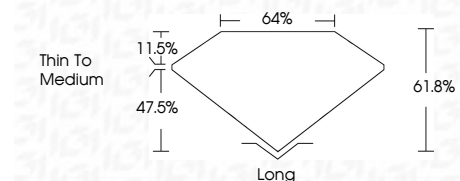
Red symbols indicate internal characteristics.  
Green symbols indicate external characteristics.

**COLOR**

D E F G H I J Faint Very Light Light

**CLARITY**

FL	IF	VS <sup>1-2</sup>	VS <sup>1-2</sup>	SI <sup>1-2</sup>	I <sup>1-3</sup>
Flawless	Internally Flawless	Very Very Slightly Included	Very Slightly Included	Slightly Included	Included



**ADDITIONAL GRADING INFORMATION**

Polish **EXCELLENT**

Symmetry **EXCELLENT**

Fluorescence **SLIGHT**

Inscription(s) **IGI LG804674719**

Comments: This Laboratory Grown Diamond was created by Chemical Vapor Deposition (CVD) growth process. Indications of post-growth treatment.



June 3, 2026  
IGI Report No LG804674719  
EMERALD CUT  
3.00 CARATS  
10.07 X 6.85 X 4.23 MM  
FANCY INTENSE PINK  
VS 1  
61.8%  
47.5%  
Thin To Medium  
Long  
EXCELLENT  
EXCELLENT  
SLIGHT  
IGI LG804674719  
Comments: This Laboratory Grown Diamond was created by Chemical Vapor Deposition (CVD) growth process. Indications of post-growth treatment.