



# INTERNATIONAL GEMOLOGICAL INSTITUTE

ELECTRONIC COPY



June 11, 2026

IGI Report Number **LG804671623**  
**ROUND BRILLIANT**  
**LABORATORY GROWN DIAMOND**  
**6.15 - 6.19 X 3.88 MM**

## LABORATORY GROWN DIAMOND REPORT

June 11, 2026  
IGI Report Number **LG804671623**  
Description **LABORATORY GROWN DIAMOND**  
Shape and Cutting Style **ROUND BRILLIANT**  
Measurements **6.15 - 6.19 X 3.88 MM**

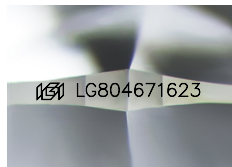
### GRADING RESULTS

Carat Weight **0.91 CARAT**  
Color Grade **D**  
Clarity Grade **INTERNALLY FLAWLESS**  
Cut Grade **EXCELLENT**

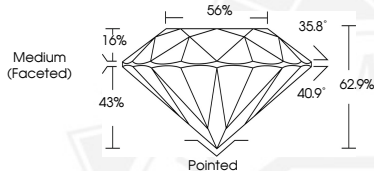
### ADDITIONAL GRADING INFORMATION

Polish **EXCELLENT**  
Symmetry **EXCELLENT**  
Fluorescence **NONE**  
Inscription(s) **IGI LG804671623**

Comments: As Grown - No indication of post-growth treatment. This Laboratory Grown Diamond was created by High Pressure High Temperature (HPHT) growth process. Type II



Sample Image Used



**0.91 CARAT**  
**D**  
**I.F.**  
**EXCELLENT**  
**EXCELLENT**  
**EXCELLENT**  
**NONE**  
**IGI LG804671623**

Comments: As Grown - No indication of post-growth treatment. This Laboratory Grown Diamond was created by High Pressure High Temperature (HPHT) growth process. Type II



June 11, 2026

IGI Report Number **LG804671623**  
**ROUND BRILLIANT**  
**LABORATORY GROWN DIAMOND**  
**6.15 - 6.19 X 3.88 MM**

**0.91 CARAT**  
**D**  
**I.F.**  
**EXCELLENT**  
**EXCELLENT**  
**EXCELLENT**  
**NONE**  
**IGI LG804671623**

Comments: As Grown - No indication of post-growth treatment. This Laboratory Grown Diamond was created by High Pressure High Temperature (HPHT) growth process. Type II



THIS DOCUMENT WAS PRODUCED WITH THE FOLLOWING SECURITY MEASURES: SPECIAL DOCUMENT PAPER, INK SCREENS, WATERMARK, BACKGROUND DESIGNS, HOLOGRAM AND OTHER SECURITY FEATURES NOT LISTED AND DO EXCEED DOCUMENT SECURITY INDUSTRY GUIDELINES.

For terms & conditions and to verify this report, please visit [www.igi.org](http://www.igi.org)