



June 8, 2026

IGI Report Number LG804671485
ROUND BRILLIANT
LABORATORY GROWN DIAMOND
6.29 - 6.33 X 3.94 MM

Carat Weight 0.97 CARAT
Color Grade D
Clarity Grade VVS 1
Cut Grade IDEAL
Polish EXCELLENT
Symmetry EXCELLENT
Fluorescence NONE
Inscription(s) IGI LG804671485

Comments: As Grown - No indication of post-growth treatment. This Laboratory Grown Diamond was created by High Pressure High Temperature (HPHT) growth process. Type II

LABORATORY GROWN DIAMOND REPORT

June 8, 2026
IGI Report Number **LG804671485**
Description **LABORATORY GROWN DIAMOND**
Shape and Cutting Style **ROUND BRILLIANT**
Measurements **6.29 - 6.33 X 3.94 MM**

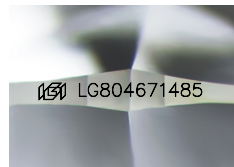
GRADING RESULTS

Carat Weight 0.97 CARAT
Color Grade D
Clarity Grade VVS 1
Cut Grade IDEAL

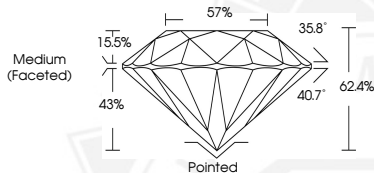
ADDITIONAL GRADING INFORMATION

Polish EXCELLENT
Symmetry EXCELLENT
Fluorescence NONE
Inscription(s) IGI LG804671485

Comments: As Grown - No indication of post-growth treatment. This Laboratory Grown Diamond was created by High Pressure High Temperature (HPHT) growth process. Type II



Sample Image Used



June 8, 2026

IGI Report Number LG804671485
ROUND BRILLIANT
LABORATORY GROWN DIAMOND
6.29 - 6.33 X 3.94 MM

Carat Weight 0.97 CARAT
Color Grade D
Clarity Grade VVS 1
Cut Grade IDEAL
Polish EXCELLENT
Symmetry EXCELLENT
Fluorescence NONE
Inscription(s) IGI LG804671485

Comments: As Grown - No indication of post-growth treatment. This Laboratory Grown Diamond was created by High Pressure High Temperature (HPHT) growth process. Type II



THIS DOCUMENT WAS PRODUCED WITH THE FOLLOWING SECURITY MEASURES: SPECIAL DOCUMENT PAPER, INK SCREENS, WATERMARK, BACKGROUND DESIGNS, HOLOGRAM AND OTHER SECURITY FEATURES NOT LISTED AND DO EXCEED DOCUMENT SECURITY INDUSTRY GUIDELINES.