



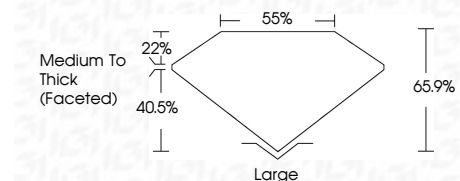
ELECTRONIC COPY

LG804670119
Report verification at igi.org



June 17, 2026
IGI Report Number **LG804670119**
Description **LABORATORY GROWN DIAMOND**
Shape and Cutting Style **ROUND MODIFIED BRILLIANT**
Measurements **10.55 - 11.10 X 7.09 MM**

GRADING RESULTS
Carat Weight **6.01 CARATS**
Color Grade **FAINT PINKISH BROWN**
Clarity Grade **VS 1**



ADDITIONAL GRADING INFORMATION
Polish **EXCELLENT**
Symmetry **VERY GOOD**
Fluorescence **NONE**
Inscription(s) **IGI LG804670119**
Comments: This Laboratory Grown Diamond was created by Chemical Vapor Deposition (CVD) growth process. Type IIa



June 17, 2026
IGI Report No **LG804670119**
ROUND MODIFIED BRILLIANT
Carat Weight **6.01 CARATS**
Color Grade **FAINT PINKISH BROWN**
Clarity Grade **VS 1**
Depth **65.9%**
Girdle **Medium To Thick (Faceted)**
Culet **Large**
Polish **EXCELLENT**
Symmetry **VERY GOOD**
Fluorescence **NONE**
Inscription(s) **IGI LG804670119**
Comments: This Laboratory Grown Diamond was created by Chemical Vapor Deposition (CVD) growth process. Type IIa

LABORATORY GROWN DIAMOND REPORT

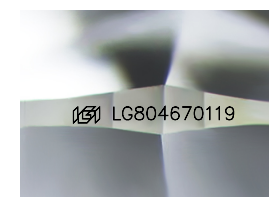
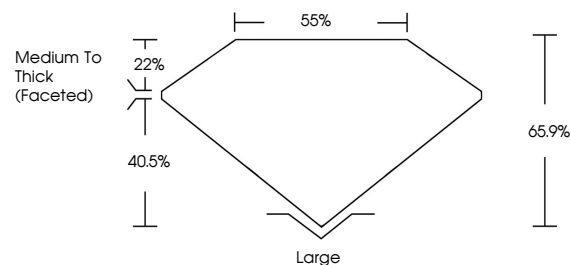
June 17, 2026
IGI Report Number **LG804670119**
Description **LABORATORY GROWN DIAMOND**
Shape and Cutting Style **ROUND MODIFIED BRILLIANT**
Measurements **10.55 - 11.10 X 7.09 MM**

GRADING RESULTS
Carat Weight **6.01 CARATS**
Color Grade **FAINT PINKISH BROWN**
Clarity Grade **VS 1**

ADDITIONAL GRADING INFORMATION
Polish **EXCELLENT**
Symmetry **VERY GOOD**
Fluorescence **NONE**
Inscription(s) **IGI LG804670119**

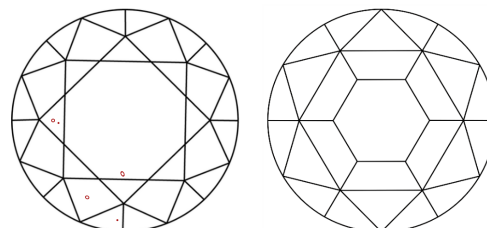
Comments: This Laboratory Grown Diamond was created by Chemical Vapor Deposition (CVD) growth process. Type IIa

PROPORTIONS



Sample Image Used

CLARITY CHARACTERISTICS



KEY TO SYMBOLS

Red symbols indicate internal characteristics.
Green symbols indicate external characteristics.

COLOR

D E F G H I J Faint Very Light Light

CLARITY

FL	IF	VS ¹⁻²	VS ¹⁻²	SI ¹⁻²	I ¹⁻³
Flawless	Internally Flawless	Very Very Slightly Included	Very Slightly Included	Slightly Included	Included

