



**ELECTRONIC COPY**

LG804670067  
Report verification at igi.org



June 22, 2026  
IGI Report Number **LG804670067**  
Description **LABORATORY GROWN DIAMOND**  
Shape and Cutting Style **SQUARE EMERALD CUT**  
Measurements **8.36 X 8.29 X 5.94 MM**  
**GRADING RESULTS**  
Carat Weight **3.51 CARATS**  
Color Grade **FANCY INTENSE YELLOW**  
Clarity Grade **VS 1**

June 22, 2026  
IGI Report Number **LG804670067**  
Description **LABORATORY GROWN DIAMOND**  
Shape and Cutting Style **SQUARE EMERALD CUT**  
Measurements **8.36 X 8.29 X 5.94 MM**

**GRADING RESULTS**

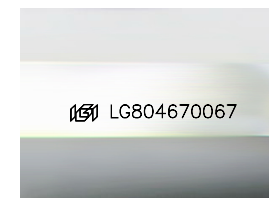
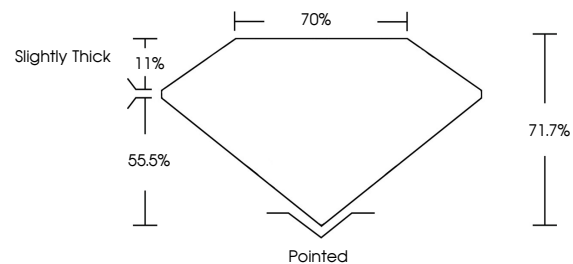
Carat Weight **3.51 CARATS**  
Color Grade **FANCY INTENSE YELLOW**  
Clarity Grade **VS 1**

**ADDITIONAL GRADING INFORMATION**

Polish **EXCELLENT**  
Symmetry **EXCELLENT**  
Fluorescence **NONE**  
Inscription(s) **IGI LG804670067**

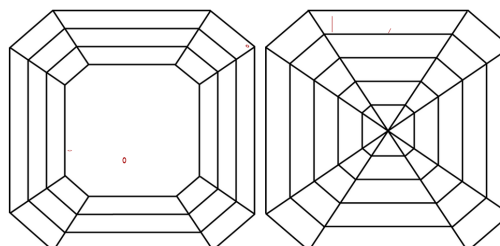
Comments: This Laboratory Grown Diamond was created by Chemical Vapor Deposition (CVD) growth process.

**PROPORTIONS**



Sample Image Used

**CLARITY CHARACTERISTICS**



**KEY TO SYMBOLS**

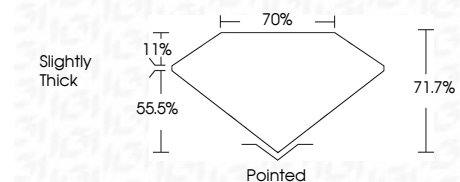
Red symbols indicate internal characteristics.  
Green symbols indicate external characteristics.

**COLOR**

D E F G H I J Faint Very Light Light

**CLARITY**

FL	IF	VS <sup>1-2</sup>	VS <sup>1-2</sup>	SI <sup>1-2</sup>	I <sup>1-3</sup>
Flawless	Internally Flawless	Very Very Slightly Included	Very Slightly Included	Slightly Included	Included



**ADDITIONAL GRADING INFORMATION**

Polish **EXCELLENT**  
Symmetry **EXCELLENT**  
Fluorescence **NONE**  
Inscription(s) **IGI LG804670067**  
Comments: This Laboratory Grown Diamond was created by Chemical Vapor Deposition (CVD) growth process.



**IGI**



June 22, 2026  
IGI Report No **LG804670067**  
**SQUARE EMERALD CUT**  
**3.51 CARATS**  
Carat Weight **FANCY INTENSE YELLOW**  
Color Grade **VS 1**  
Clarity Grade **71.7%**  
Depth **70%**  
Table **Slightly Thick**  
Girdle **Pointed**  
Culet **EXCELLENT**  
Polish **EXCELLENT**  
Symmetry **NONE**  
Fluorescence **NONE**  
Inscription(s) **IGI LG804670067**  
Comments: This Laboratory Grown Diamond was created by Chemical Vapor Deposition (CVD) growth process.