



ELECTRONIC COPY

LG804670053 Report verification at igi.org



June 22, 2026
IGI Report Number LG804670053
Description LABORATORY GROWN DIAMOND
Shape and Cutting Style SQUARE CUSHION MODIFIED BRILLIANT
Measurements 7.97 X 7.92 X 5.40 MM
GRADING RESULTS
Carat Weight 3.00 CARATS
Color Grade FANCY VIVID PINK
Clarity Grade VVS 2

LABORATORY GROWN DIAMOND REPORT

June 22, 2026
IGI Report Number LG804670053
Description LABORATORY GROWN DIAMOND
Shape and Cutting Style SQUARE CUSHION MODIFIED BRILLIANT
Measurements 7.97 X 7.92 X 5.40 MM

GRADING RESULTS

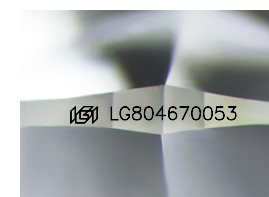
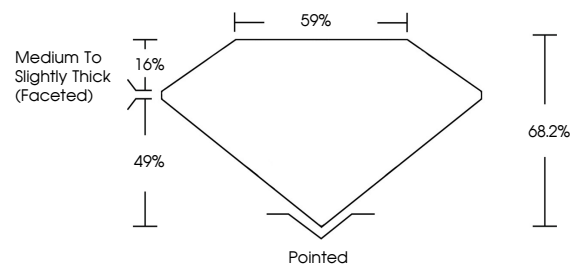
Carat Weight 3.00 CARATS
Color Grade FANCY VIVID PINK
Clarity Grade VVS 2

ADDITIONAL GRADING INFORMATION

Polish EXCELLENT
Symmetry EXCELLENT
Fluorescence SLIGHT
Inscription(s) LG804670053

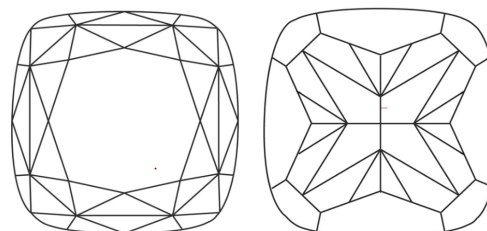
Comments: This Laboratory Grown Diamond was created by Chemical Vapor Deposition (CVD) growth process.
Indications of post-growth treatment.

PROPORTIONS



Sample Image Used

CLARITY CHARACTERISTICS



KEY TO SYMBOLS

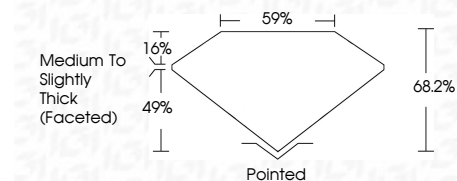
Red symbols indicate internal characteristics.
Green symbols indicate external characteristics.

COLOR

D E F G H I J Faint Very Light Light

CLARITY

FL IF VVS 1-2 VS 1-2 SI 1-2 I 1-3
Flawless Internally Flawless Very Very Slightly Included Very Slightly Included Slightly Included Included



ADDITIONAL GRADING INFORMATION

Polish EXCELLENT
Symmetry EXCELLENT
Fluorescence SLIGHT
Inscription(s) LG804670053
Comments: This Laboratory Grown Diamond was created by Chemical Vapor Deposition (CVD) growth process.
Indications of post-growth treatment.



June 22, 2026
IGI Report No. LG804670053
SQUARE CUSHION MODIFIED BRILLIANT
3.00 CARATS
FANCY VIVID PINK
VVS 2
68.2%
59%
Medium to Slightly Thick (Faceted)
Pointed
EXCELLENT
EXCELLENT
SLIGHT
LG804670053
Comments: This Laboratory Grown Diamond was created by Chemical Vapor Deposition (CVD) growth process.
Indications of post-growth treatment.