



ELECTRONIC COPY

LG804666351
Report verification at igi.org



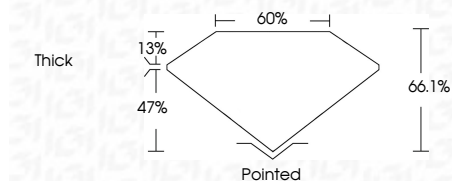
June 18, 2026
IGI Report Number LG804666351
Description LABORATORY GROWN DIAMOND

Shape and Cutting Style CUT CORNERED RECTANGULAR MODIFIED BRILLIANT

Measurements 9.20 X 6.35 X 4.20 MM

GRADING RESULTS

Carat Weight 2.10 CARATS
Color Grade D
Clarity Grade FLAWLESS



ADDITIONAL GRADING INFORMATION

Polish EXCELLENT
Symmetry EXCELLENT
Fluorescence NONE
Inscription(s) LG804666351
Comments: As Grown - No indication of post-growth treatment.
This Laboratory Grown Diamond was created by High Pressure High Temperature (HPHT) growth process. Type II



June 18, 2026
IGI Report No. LG804666351
CUT CORNERED RECT. MODIFIED BRILLIANT
9.20 X 6.35 X 4.20 MM
2.10 CARATS
D
FLAWLESS
66.1%
60%
Thick
Pointed
EXCELLENT
EXCELLENT
NONE
LG804666351
Comments: As Grown - No indication of post-growth treatment. This Laboratory Grown Diamond was created by High Pressure High Temperature (HPHT) growth process. Type II

LABORATORY GROWN DIAMOND REPORT

June 18, 2026
IGI Report Number LG804666351
Description LABORATORY GROWN DIAMOND
Shape and Cutting Style CUT CORNERED RECTANGULAR MODIFIED BRILLIANT
Measurements 9.20 X 6.35 X 4.20 MM

GRADING RESULTS

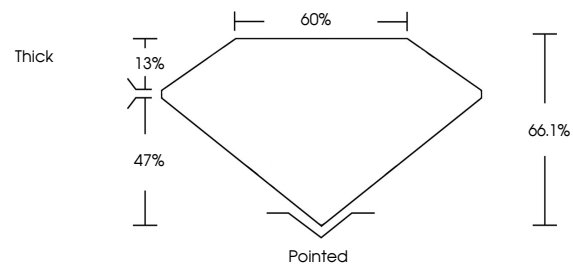
Carat Weight 2.10 CARATS
Color Grade D
Clarity Grade FLAWLESS

ADDITIONAL GRADING INFORMATION

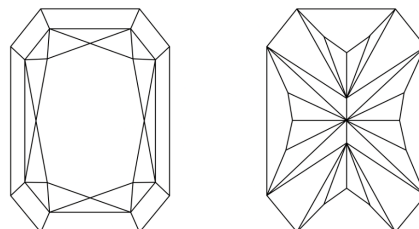
Polish EXCELLENT
Symmetry EXCELLENT
Fluorescence NONE
Inscription(s) LG804666351

Comments: As Grown - No indication of post-growth treatment.
This Laboratory Grown Diamond was created by High Pressure High Temperature (HPHT) growth process. Type II

PROPORTIONS

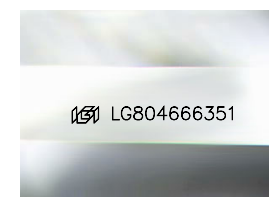


CLARITY CHARACTERISTICS



KEY TO SYMBOLS

Red symbols indicate internal characteristics.
Green symbols indicate external characteristics.



Sample Image Used

COLOR

D E F G H I J Faint Very Light Light

CLARITY

FL IF VS 1-2 VS 1-2 SI 1-2 I 1-3
Flawless Internally Flawless Very Very Slightly Included Very Slightly Included Slightly Included Included

