



ELECTRONIC COPY

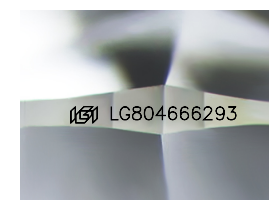
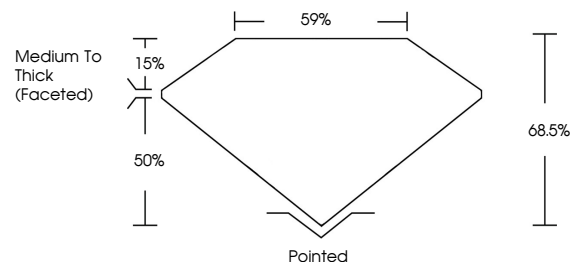
LG804666293
Report verification at igi.org



June 19, 2026
IGI Report Number **LG804666293**
Description **LABORATORY GROWN DIAMOND**
Shape and Cutting Style **CUSHION MODIFIED BRILLIANT**
Measurements **8.33 X 6.95 X 4.76 MM**
GRADING RESULTS
Carat Weight **2.12 CARATS**
Color Grade **D**
Clarity Grade **FLAWLESS**

June 19, 2026
IGI Report Number **LG804666293**
Description **LABORATORY GROWN DIAMOND**
Shape and Cutting Style **CUSHION MODIFIED BRILLIANT**
Measurements **8.33 X 6.95 X 4.76 MM**

PROPORTIONS

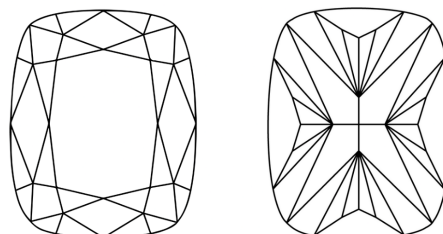


Sample Image Used

GRADING RESULTS

Carat Weight **2.12 CARATS**
Color Grade **D**
Clarity Grade **FLAWLESS**

CLARITY CHARACTERISTICS



ADDITIONAL GRADING INFORMATION

Polish **EXCELLENT**
Symmetry **EXCELLENT**
Fluorescence **NONE**
Inscription(s) **IGI LG804666293**

Comments: As Grown - No indication of post-growth treatment.
This Laboratory Grown Diamond was created by High Pressure High Temperature (HPHT) growth process.
Type II

KEY TO SYMBOLS

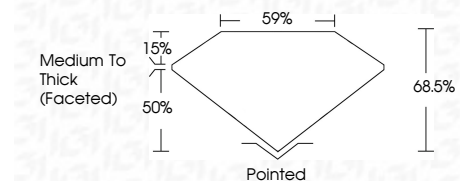
Red symbols indicate internal characteristics.
Green symbols indicate external characteristics.

COLOR

D E F G H I J Faint Very Light Light

CLARITY

FL	IF	VS ¹⁻²	VS ¹⁻²	SI ¹⁻²	I ¹⁻³
Flawless	Internally Flawless	Very Very Slightly Included	Very Slightly Included	Slightly Included	Included



ADDITIONAL GRADING INFORMATION

Polish **EXCELLENT**
Symmetry **EXCELLENT**
Fluorescence **NONE**
Inscription(s) **IGI LG804666293**
Comments: As Grown - No indication of post-growth treatment.
This Laboratory Grown Diamond was created by High Pressure High Temperature (HPHT) growth process.
Type II



IGI



June 19, 2026
IGI Report No LG804666293
CUSHION MODIFIED BRILLIANT
8.33 X 6.95 X 4.76 MM
Carat Weight **2.12 CARATS**
Color Grade **D**
Clarity Grade **FLAWLESS**
Depth **68.5%**
Table **50%**
Girdle **Medium To Thick (Faceted)**
Culet **Pointed**
Polish **EXCELLENT**
Symmetry **EXCELLENT**
Fluorescence **NONE**
Inscription(s) **IGI LG804666293**

Comments: As Grown - No indication of post-growth treatment.
This Laboratory Grown Diamond was created by High Pressure High Temperature (HPHT) growth process.
Type II