



**ELECTRONIC COPY**

LG804665578  
Report verification at igi.org



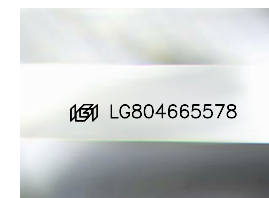
June 12, 2026  
IGI Report Number **LG804665578**  
Description **LABORATORY GROWN DIAMOND**

Shape and Cutting Style **CUT CORNERED  
RECTANGULAR MODIFIED  
BRILLIANT**

Measurements **12.33 X 8.64 X 5.65 MM**

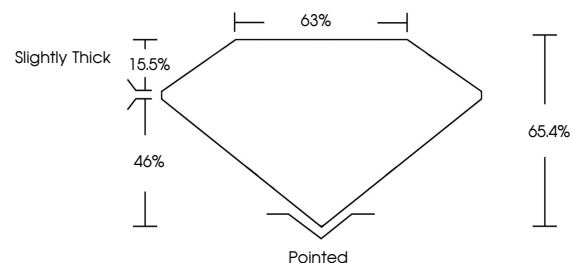
**GRADING RESULTS**

Carat Weight **5.09 CARATS**  
Color Grade **D**  
Clarity Grade **FLAWLESS**

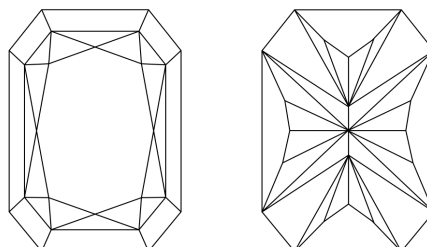


Sample Image Used

**PROPORTIONS**



**CLARITY CHARACTERISTICS**



**KEY TO SYMBOLS**

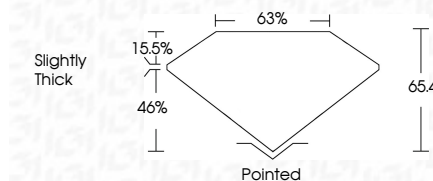
Red symbols indicate internal characteristics.  
Green symbols indicate external characteristics.

**COLOR**

D E F G H I J Faint Very Light Light

**CLARITY**

FL	IF	VS <sup>1-2</sup>	VS <sup>1-2</sup>	SI <sup>1-2</sup>	I <sup>1-3</sup>
Flawless	Internally Flawless	Very Very Slightly Included	Very Slightly Included	Slightly Included	Included



**ADDITIONAL GRADING INFORMATION**

Polish **EXCELLENT**  
Symmetry **EXCELLENT**  
Fluorescence **NONE**

Inscription(s) **IGI LG804665578**

Comments: As Grown - No indication of post-growth treatment.  
This Laboratory Grown Diamond was created by High Pressure High Temperature (HPHT) growth process.  
Type II



June 12, 2026  
IGI Report No. LG804665578  
CUT CORNERED RECT. MODIFIED BRILLIANT  
12.33 X 8.64 X 5.65 MM  
Carat Weight 5.09 CARATS  
Color Grade D  
Clarity Grade FLAWLESS  
Depth 46.4%  
Table 15.5%  
Girdle Slightly Thick  
Culet Pointed  
Polish EXCELLENT  
Symmetry EXCELLENT  
Fluorescence NONE  
Inscription(s) IGI LG804665578  
Comments: As Grown - No indication of post-growth treatment.  
This Laboratory Grown Diamond was created by High Pressure High Temperature (HPHT) growth process.  
Type II