



ELECTRONIC COPY

LG804665531
Report verification at igi.org



June 12, 2026

IGI Report Number **LG804665531**

Description **LABORATORY GROWN DIAMOND**

Shape and Cutting Style **ROUND BRILLIANT**

Measurements **10.40 - 10.44 X 6.49 MM**

GRADING RESULTS

Carat Weight **4.33 CARATS**

Color Grade **D**

Clarity Grade **FLAWLESS**

Cut Grade **IDEAL**

June 12, 2026

IGI Report Number **LG804665531**

Description **LABORATORY GROWN DIAMOND**

Shape and Cutting Style **ROUND BRILLIANT**

Measurements **10.40 - 10.44 X 6.49 MM**

GRADING RESULTS

Carat Weight **4.33 CARATS**

Color Grade **D**

Clarity Grade **FLAWLESS**

Cut Grade **IDEAL**

ADDITIONAL GRADING INFORMATION

Polish **EXCELLENT**

Symmetry **EXCELLENT**

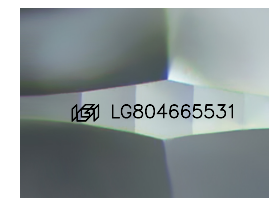
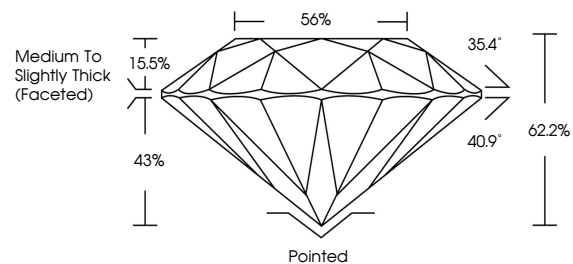
Fluorescence **NONE**

Inscription(s) **LG804665531**

Comments: HEARTS & ARROWS

As Grown - No indication of post-growth treatment.
This Laboratory Grown Diamond was created by High Pressure High Temperature (HPHT) growth process.
Type II

PROPORTIONS



Sample Image Used

CLARITY CHARACTERISTICS



KEY TO SYMBOLS

Red symbols indicate internal characteristics.
Green symbols indicate external characteristics.

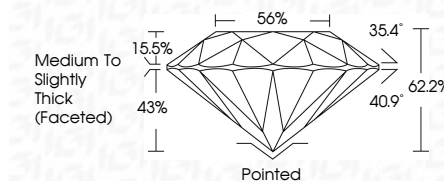


COLOR

D E F G H I J Faint Very Light Light

CLARITY

FL	IF	VS ¹⁻²	VS ¹⁻²	SI ¹⁻²	I ¹⁻³
Flawless	Internally Flawless	Very Very Slightly Included	Very Slightly Included	Slightly Included	Included



ADDITIONAL GRADING INFORMATION

Polish **EXCELLENT**

Symmetry **EXCELLENT**

Fluorescence **NONE**

Inscription(s) **LG804665531**

Comments: HEARTS & ARROWS

As Grown - No indication of post-growth treatment.
This Laboratory Grown Diamond was created by High Pressure High Temperature (HPHT) growth process.
Type II



IGI



June 12, 2026
IGI Report No LG804665531
ROUND BRILLIANT

10.40 - 10.44 X 6.49 MM
4.33 CARATS
D
FLAWLESS
IDEAL
62.2%
56%
Medium To Slightly Thick (Faceted)
Pointed
EXCELLENT
EXCELLENT
NONE
NONE
IGI LG804665531

Comments: HEARTS & ARROWS
As Grown - No indication of post-growth treatment.
This Laboratory Grown Diamond was created by High Pressure High Temperature (HPHT) growth process.
Type II