



ELECTRONIC COPY

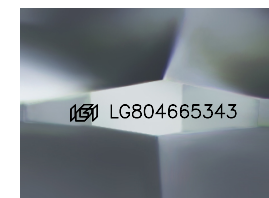
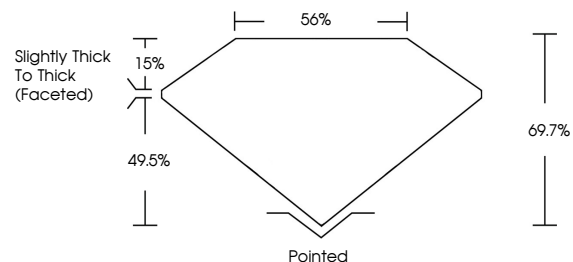
LG804665343
Report verification at igi.org



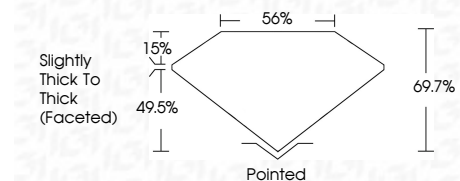
June 17, 2026
IGI Report Number **LG804665343**
Description **LABORATORY GROWN DIAMOND**
Shape and Cutting Style **CUSHION MODIFIED BRILLIANT**
Measurements **8.27 X 6.94 X 4.84 MM**
GRADING RESULTS
Carat Weight **2.11 CARATS**
Color Grade **D**
Clarity Grade **FLAWLESS**

June 17, 2026
IGI Report Number **LG804665343**
Description **LABORATORY GROWN DIAMOND**
Shape and Cutting Style **CUSHION MODIFIED BRILLIANT**
Measurements **8.27 X 6.94 X 4.84 MM**

PROPORTIONS



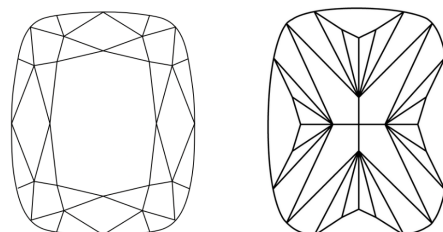
Sample Image Used



GRADING RESULTS

Carat Weight **2.11 CARATS**
Color Grade **D**
Clarity Grade **FLAWLESS**

CLARITY CHARACTERISTICS



ADDITIONAL GRADING INFORMATION

Polish **EXCELLENT**
Symmetry **EXCELLENT**
Fluorescence **NONE**
Inscription(s) **IGI LG804665343**

COLOR

D E F G H I J Faint Very Light Light

CLARITY

FL	IF	VS ¹⁻²	VS ¹⁻²	SI ¹⁻²	I ¹⁻³
Flawless	Internally Flawless	Very Very Slightly Included	Very Slightly Included	Slightly Included	Included

ADDITIONAL GRADING INFORMATION

Polish **EXCELLENT**
Symmetry **EXCELLENT**
Fluorescence **NONE**
Inscription(s) **IGI LG804665343**
Comments: As Grown - No indication of post-growth treatment.
This Laboratory Grown Diamond was created by High Pressure High Temperature (HPHT) growth process.
Type II

KEY TO SYMBOLS

Red symbols indicate internal characteristics.
Green symbols indicate external characteristics.



June 17, 2026
IGI Report No LG804665343
CUSHION MODIFIED BRILLIANT
8.27 X 6.94 X 4.84 MM
Carat Weight **2.11 CARATS**
Color Grade **D**
Clarity Grade **FLAWLESS**
Depth **69.7%**
Table **55%**
Girdle **Slightly Thick To Thick (Faceted)**
Culet **Pointed**
Polish **EXCELLENT**
Symmetry **EXCELLENT**
Fluorescence **NONE**
Inscription(s) **IGI LG804665343**
Comments: As Grown - No indication of post-growth treatment.
This Laboratory Grown Diamond was created by High Pressure High Temperature (HPHT) growth process.
Type II