



**ELECTRONIC COPY**

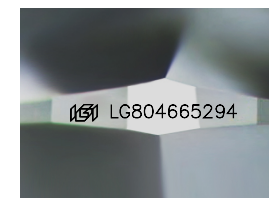
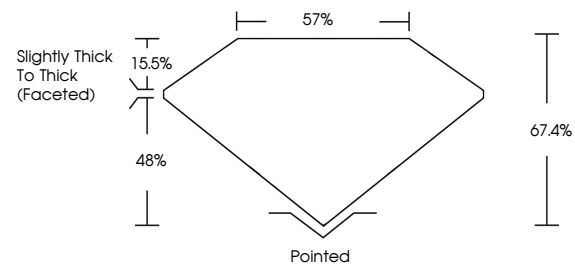
LG804665294  
Report verification at igi.org



June 15, 2026  
IGI Report Number **LG804665294**  
Description **LABORATORY GROWN DIAMOND**  
Shape and Cutting Style **CUSHION MODIFIED BRILLIANT**  
Measurements **9.43 X 7.92 X 5.34 MM**  
**GRADING RESULTS**  
Carat Weight **3.10 CARATS**  
Color Grade **D**  
Clarity Grade **VVS 1**

June 15, 2026  
IGI Report Number **LG804665294**  
Description **LABORATORY GROWN DIAMOND**  
Shape and Cutting Style **CUSHION MODIFIED BRILLIANT**  
Measurements **9.43 X 7.92 X 5.34 MM**

**PROPORTIONS**

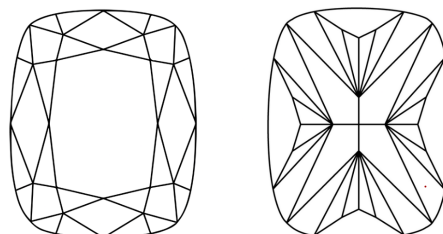


Sample Image Used

**GRADING RESULTS**

Carat Weight **3.10 CARATS**  
Color Grade **D**  
Clarity Grade **VVS 1**

**CLARITY CHARACTERISTICS**



**ADDITIONAL GRADING INFORMATION**

Polish **EXCELLENT**  
Symmetry **EXCELLENT**  
Fluorescence **NONE**  
Inscription(s) **IGI LG804665294**

Comments: As Grown - No indication of post-growth treatment.  
This Laboratory Grown Diamond was created by High Pressure High Temperature (HPHT) growth process.  
Type II

**KEY TO SYMBOLS**

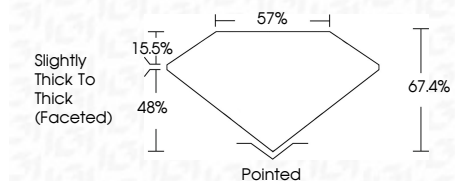
Red symbols indicate internal characteristics.  
Green symbols indicate external characteristics.

**COLOR**

D E F G H I J Faint Very Light Light

**CLARITY**

FL	IF	VVS <sup>1-2</sup>	VS <sup>1-2</sup>	SI <sup>1-2</sup>	I <sup>1-3</sup>
Flawless	Internally Flawless	Very Very Slightly Included	Very Slightly Included	Slightly Included	Included



**ADDITIONAL GRADING INFORMATION**

Polish **EXCELLENT**  
Symmetry **EXCELLENT**  
Fluorescence **NONE**  
Inscription(s) **IGI LG804665294**  
Comments: As Grown - No indication of post-growth treatment.  
This Laboratory Grown Diamond was created by High Pressure High Temperature (HPHT) growth process.  
Type II



June 15, 2026  
IGI Report No LG804665294  
CUSHION MODIFIED BRILLIANT  
9.43 X 7.92 X 5.34 MM  
3.10 CARATS  
D  
VVS 1  
67.4%  
57%  
Slightly Thick To Thick (Faceted)  
Pointed  
EXCELLENT  
EXCELLENT  
NONE  
IGI LG804665294

Comments: As Grown - No indication of post-growth treatment.  
This Laboratory Grown Diamond was created by High Pressure High Temperature (HPHT) growth process.  
Type II