



**ELECTRONIC COPY**

LG804665205  
Report verification at igi.org



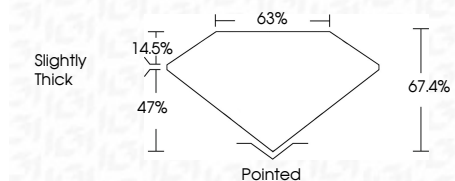
June 13, 2026  
IGI Report Number **LG804665205**  
Description **LABORATORY GROWN DIAMOND**

Shape and Cutting Style **CUT CORNERED  
RECTANGULAR MODIFIED  
BRILLIANT**

Measurements **10.28 X 7.02 X 4.73 MM**

**GRADING RESULTS**

Carat Weight **3.02 CARATS**  
Color Grade **D**  
Clarity Grade **FLAWLESS**



**ADDITIONAL GRADING INFORMATION**

Polish **EXCELLENT**  
Symmetry **EXCELLENT**  
Fluorescence **NONE**  
Inscription(s) **IGI LG804665205**  
Comments: As Grown - No indication of post-growth treatment.  
This Laboratory Grown Diamond was created by High Pressure High Temperature (HPHT) growth process. Type II



June 13, 2026  
IGI Report No LG804665205  
CUT CORNERED RECT. MODIFIED BRILLIANT  
10.28 X 7.02 X 4.73 MM  
Carat Weight **3.02 CARATS**  
Color Grade **D**  
Clarity Grade **FLAWLESS**  
Depth **67.4%**  
Table **47%**  
Girdle **Slightly Thick**  
Culet **Pointed**  
Polish **EXCELLENT**  
Symmetry **EXCELLENT**  
Fluorescence **NONE**  
Inscription(s) **IGI LG804665205**  
Comments: As Grown - No indication of post-growth treatment.  
This Laboratory Grown Diamond was created by High Pressure High Temperature (HPHT) growth process. Type II

June 13, 2026  
IGI Report Number **LG804665205**  
Description **LABORATORY GROWN DIAMOND**  
Shape and Cutting Style **CUT CORNERED RECTANGULAR  
MODIFIED BRILLIANT**  
Measurements **10.28 X 7.02 X 4.73 MM**

**GRADING RESULTS**

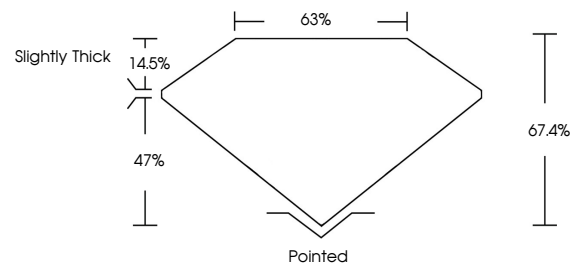
Carat Weight **3.02 CARATS**  
Color Grade **D**  
Clarity Grade **FLAWLESS**

**ADDITIONAL GRADING INFORMATION**

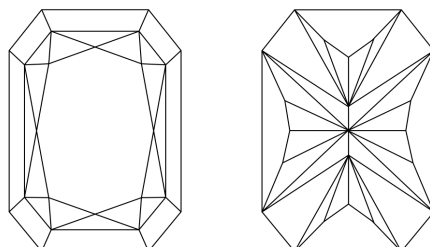
Polish **EXCELLENT**  
Symmetry **EXCELLENT**  
Fluorescence **NONE**  
Inscription(s) **IGI LG804665205**

Comments: As Grown - No indication of post-growth treatment.  
This Laboratory Grown Diamond was created by High Pressure High Temperature (HPHT) growth process. Type II

**PROPORTIONS**

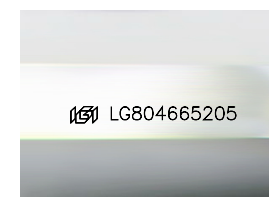


**CLARITY CHARACTERISTICS**



**KEY TO SYMBOLS**

Red symbols indicate internal characteristics.  
Green symbols indicate external characteristics.



Sample Image Used

**COLOR**

D E F G H I J Faint Very Light Light

**CLARITY**

FL	IF	VS <sup>1-2</sup>	VS <sup>1-2</sup>	SI <sup>1-2</sup>	I <sup>1-3</sup>
Flawless	Internally Flawless	Very Very Slightly Included	Very Slightly Included	Slightly Included	Included

