



ELECTRONIC COPY

LG804664231
Report verification at igi.org



June 22, 2026
IGI Report Number **LG804664231**
Description **LABORATORY GROWN DIAMOND**
Shape and Cutting Style **CUSHION MODIFIED BRILLIANT**
Measurements **10.53 X 8.71 X 5.65 MM**
GRADING RESULTS
Carat Weight **4.63 CARATS**
Color Grade **FANCY LIGHT YELLOW**
Clarity Grade **VVS 2**

LABORATORY GROWN DIAMOND REPORT

June 22, 2026
IGI Report Number **LG804664231**
Description **LABORATORY GROWN DIAMOND**
Shape and Cutting Style **CUSHION MODIFIED BRILLIANT**
Measurements **10.53 X 8.71 X 5.65 MM**

GRADING RESULTS

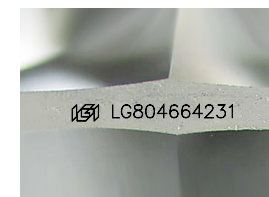
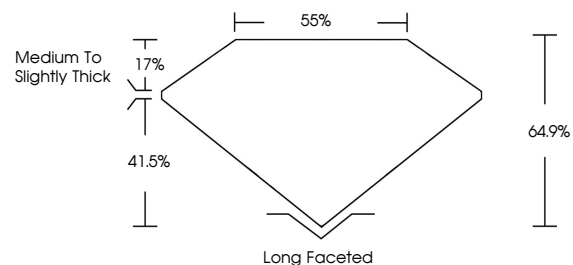
Carat Weight **4.63 CARATS**
Color Grade **FANCY LIGHT YELLOW**
Clarity Grade **VVS 2**

ADDITIONAL GRADING INFORMATION

Polish **EXCELLENT**
Symmetry **EXCELLENT**
Fluorescence **NONE**
Inscription(s) **IGI LG804664231**

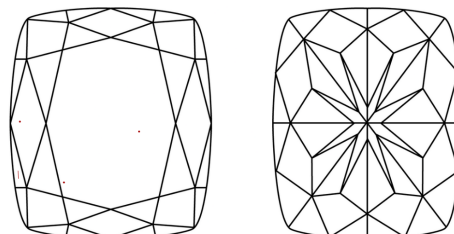
Comments: This Laboratory Grown Diamond was created by Chemical Vapor Deposition (CVD) growth process.

PROPORTIONS



Sample Image Used

CLARITY CHARACTERISTICS



KEY TO SYMBOLS

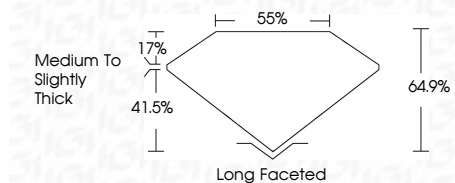
Red symbols indicate internal characteristics.
Green symbols indicate external characteristics.

COLOR

D E F G H I J Faint Very Light Light

CLARITY

FL	IF	VVS ¹⁻²	VS ¹⁻²	SI ¹⁻²	I ¹⁻³
Flawless	Internally Flawless	Very Very Slightly Included	Very Slightly Included	Slightly Included	Included



ADDITIONAL GRADING INFORMATION

Polish **EXCELLENT**
Symmetry **EXCELLENT**
Fluorescence **NONE**
Inscription(s) **IGI LG804664231**
Comments: This Laboratory Grown Diamond was created by Chemical Vapor Deposition (CVD) growth process.



June 22, 2026
IGI Report No **LG804664231**
CUSHION MODIFIED BRILLIANT
4.63 CARATS
Carat Weight **FANCY LIGHT YELLOW**
Color Grade **VVS 2**
Clarity Grade **64.9%**
Depth **85%**
Table **Medium to Slightly Thick**
Girdle **Long Faceted**
Culet **EXCELLENT**
Polish **EXCELLENT**
Symmetry **EXCELLENT**
Fluorescence **NONE**
Inscription(s) **IGI LG804664231**
Comments: This Laboratory Grown Diamond was created by Chemical Vapor Deposition (CVD) growth process.