



ELECTRONIC COPY

LG804663639
Report verification at igi.org



June 22, 2026
IGI Report Number **LG804663639**
Description **LABORATORY GROWN DIAMOND**
Shape and Cutting Style **CUT CORNERED
RECTANGULAR MODIFIED
BRILLIANT**
Measurements **10.32 X 6.82 X 4.68 MM**
GRADING RESULTS
Carat Weight **3.04 CARATS**
Color Grade **FANCY INTENSE YELLOW**
Clarity Grade **VVS 2**

June 22, 2026
IGI Report Number **LG804663639**
Description **LABORATORY GROWN DIAMOND**
Shape and Cutting Style **CUT CORNERED RECTANGULAR
MODIFIED BRILLIANT**
Measurements **10.32 X 6.82 X 4.68 MM**

GRADING RESULTS

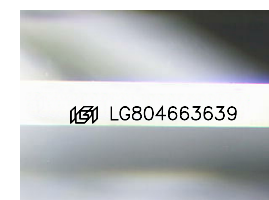
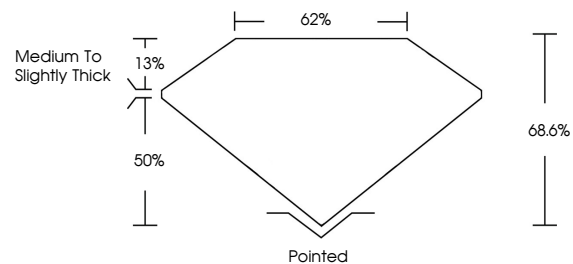
Carat Weight **3.04 CARATS**
Color Grade **FANCY INTENSE YELLOW**
Clarity Grade **VVS 2**

ADDITIONAL GRADING INFORMATION

Polish **EXCELLENT**
Symmetry **EXCELLENT**
Fluorescence **NONE**
Inscription(s) **IGI LG804663639**

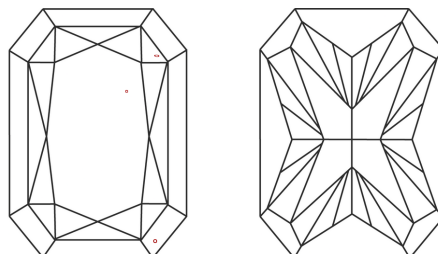
Comments: This Laboratory Grown Diamond was created by Chemical Vapor Deposition (CVD) growth process.

PROPORTIONS



Sample Image Used

CLARITY CHARACTERISTICS



KEY TO SYMBOLS

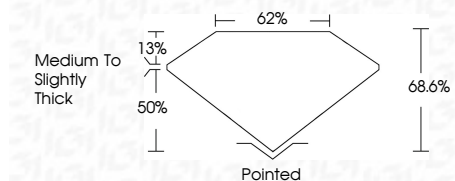
Red symbols indicate internal characteristics.
Green symbols indicate external characteristics.

COLOR

D E F G H I J Faint Very Light Light

CLARITY

FL	IF	VVS ¹⁻²	VS ¹⁻²	SI ¹⁻²	I ¹⁻³
Flawless	Internally Flawless	Very Very Slightly Included	Very Slightly Included	Slightly Included	Included



ADDITIONAL GRADING INFORMATION

Polish **EXCELLENT**
Symmetry **EXCELLENT**
Fluorescence **NONE**
Inscription(s) **IGI LG804663639**
Comments: This Laboratory Grown Diamond was created by Chemical Vapor Deposition (CVD) growth process.



June 22, 2026
IGI Report No. **LG804663639**
CUT CORNERED RECT. MODIFIED BRILLIANT
3.04 CARATS
Carat Weight
Color Grade **FANCY INTENSE YELLOW**
Clarity Grade **VVS 2**
Depth **68.6%**
Table **62%**
Girdle **Medium to Slightly Thick**
Culet **Pointed**
Polish **EXCELLENT**
Symmetry **EXCELLENT**
Fluorescence **NONE**
Inscription(s) **IGI LG804663639**
Comments: This Laboratory Grown Diamond was created by Chemical Vapor Deposition (CVD) growth process.