



**ELECTRONIC COPY**

LG804663269  
Report verification at igi.org



June 22, 2026  
IGI Report Number **LG804663269**  
Description **LABORATORY GROWN DIAMOND**  
Shape and Cutting Style **ROUND BRILLIANT**  
Measurements **11.14 - 11.20 X 6.54 MM**  
**GRADING RESULTS**  
Carat Weight **5.01 CARATS**  
Color Grade **E**  
Clarity Grade **VS 2**  
Cut Grade **EXCELLENT**

June 22, 2026  
IGI Report Number **LG804663269**  
Description **LABORATORY GROWN DIAMOND**  
Shape and Cutting Style **ROUND BRILLIANT**  
Measurements **11.14 - 11.20 X 6.54 MM**

**GRADING RESULTS**

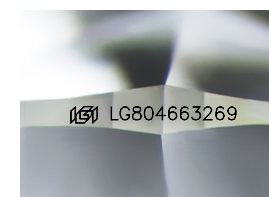
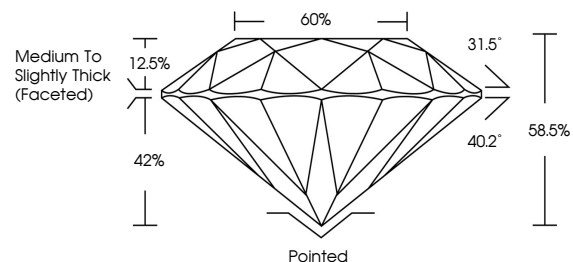
Carat Weight **5.01 CARATS**  
Color Grade **E**  
Clarity Grade **VS 2**  
Cut Grade **EXCELLENT**

**ADDITIONAL GRADING INFORMATION**

Polish **EXCELLENT**  
Symmetry **EXCELLENT**  
Fluorescence **NONE**  
Inscription(s) **IGI LG804663269**

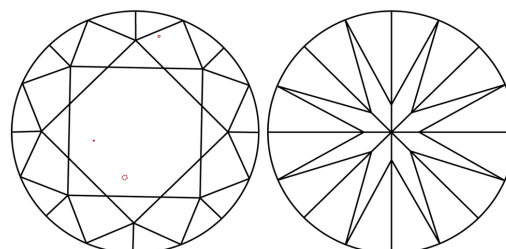
Comments: This Laboratory Grown Diamond was created by Chemical Vapor Deposition (CVD) growth process.  
Type IIa

**PROPORTIONS**



Sample Image Used

**CLARITY CHARACTERISTICS**



**KEY TO SYMBOLS**

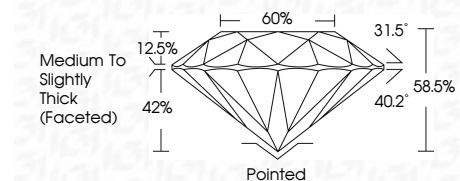
Red symbols indicate internal characteristics.  
Green symbols indicate external characteristics.

**COLOR**

D E F G H I J Faint Very Light Light

**CLARITY**

FL	IF	VS <sup>1-2</sup>	VS <sup>1-2</sup>	SI <sup>1-2</sup>	I <sup>1-3</sup>
Flawless	Internally Flawless	Very Very Slightly Included	Very Slightly Included	Slightly Included	Included



**ADDITIONAL GRADING INFORMATION**

Polish **EXCELLENT**  
Symmetry **EXCELLENT**  
Fluorescence **NONE**  
Inscription(s) **IGI LG804663269**  
Comments: This Laboratory Grown Diamond was created by Chemical Vapor Deposition (CVD) growth process.  
Type IIa



June 22, 2026  
IGI Report No. **LG804663269**  
**ROUND BRILLIANT**  
11.14 - 11.20 X 6.54 MM  
5.01 CARATS  
E  
VS 2  
EXCELLENT  
60%  
Medium To Slightly Thick (Faceted)  
Pointed  
EXCELLENT  
EXCELLENT  
NONE  
IGI LG804663269  
Comments: This Laboratory Grown Diamond was created by Chemical Vapor Deposition (CVD) growth process.  
Type IIa