



ELECTRONIC COPY

LG804662403
Report verification at igi.org



June 19, 2026
IGI Report Number **LG804662403**
Description **LABORATORY GROWN DIAMOND**
Shape and Cutting Style **ROUND BRILLIANT**
Measurements **9.36 - 9.42 X 5.56 MM**
GRADING RESULTS
Carat Weight **3.00 CARATS**
Color Grade **FANCY INTENSE BLUE**
Clarity Grade **VS 1**
Cut Grade **VERY GOOD**

June 19, 2026
IGI Report Number **LG804662403**
Description **LABORATORY GROWN DIAMOND**
Shape and Cutting Style **ROUND BRILLIANT**
Measurements **9.36 - 9.42 X 5.56 MM**

GRADING RESULTS

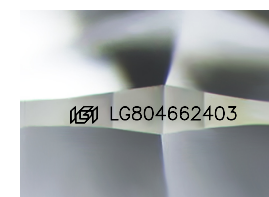
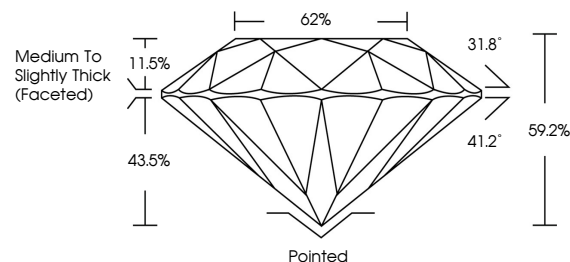
Carat Weight **3.00 CARATS**
Color Grade **FANCY INTENSE BLUE**
Clarity Grade **VS 1**
Cut Grade **VERY GOOD**

ADDITIONAL GRADING INFORMATION

Polish **EXCELLENT**
Symmetry **EXCELLENT**
Fluorescence **NONE**
Inscription(s) **IGI LG804662403**

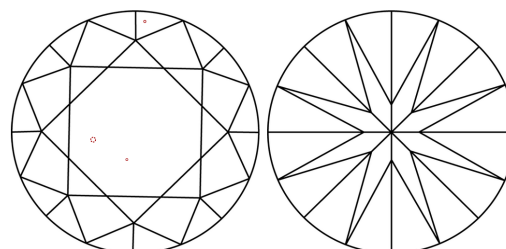
Comments: This Laboratory Grown Diamond was created by Chemical Vapor Deposition (CVD) growth process.
Indications of post-growth treatment.

PROPORTIONS



Sample Image Used

CLARITY CHARACTERISTICS



KEY TO SYMBOLS

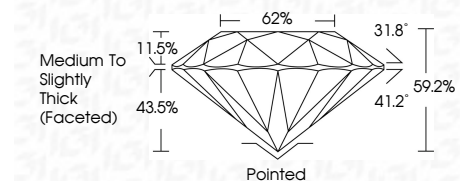
Red symbols indicate internal characteristics.
Green symbols indicate external characteristics.

COLOR

D E F G H I J Faint Very Light Light

CLARITY

FL	IF	VS ¹⁻²	VS ¹⁻²	SI ¹⁻²	I ¹⁻³
Flawless	Internally Flawless	Very Very Slightly Included	Very Slightly Included	Slightly Included	Included



ADDITIONAL GRADING INFORMATION

Polish **EXCELLENT**
Symmetry **EXCELLENT**
Fluorescence **NONE**
Inscription(s) **IGI LG804662403**
Comments: This Laboratory Grown Diamond was created by Chemical Vapor Deposition (CVD) growth process.
Indications of post-growth treatment.



June 19, 2026
IGI Report No LG804662403
ROUND BRILLIANT
3.00 CARATS
FANCY INTENSE BLUE
VS 1
VERY GOOD
9.36 - 9.42 X 5.56 MM
62%
43.5%
31.8°
41.2°
59.2%
Medium To Slightly Thick (Faceted)
Pointed
EXCELLENT
EXCELLENT
NONE
IGI LG804662403
Comments: This Laboratory Grown Diamond was created by Chemical Vapor Deposition (CVD) growth process.
Indications of post-growth treatment.